

**TANCO AUTOWRAP SYSTEMS
1250S MODEL 1994
OPERATORS HANDBOOK
AND
PARTS LIST
WD65-1250-S-M0394**

Bale Wrap Controller:

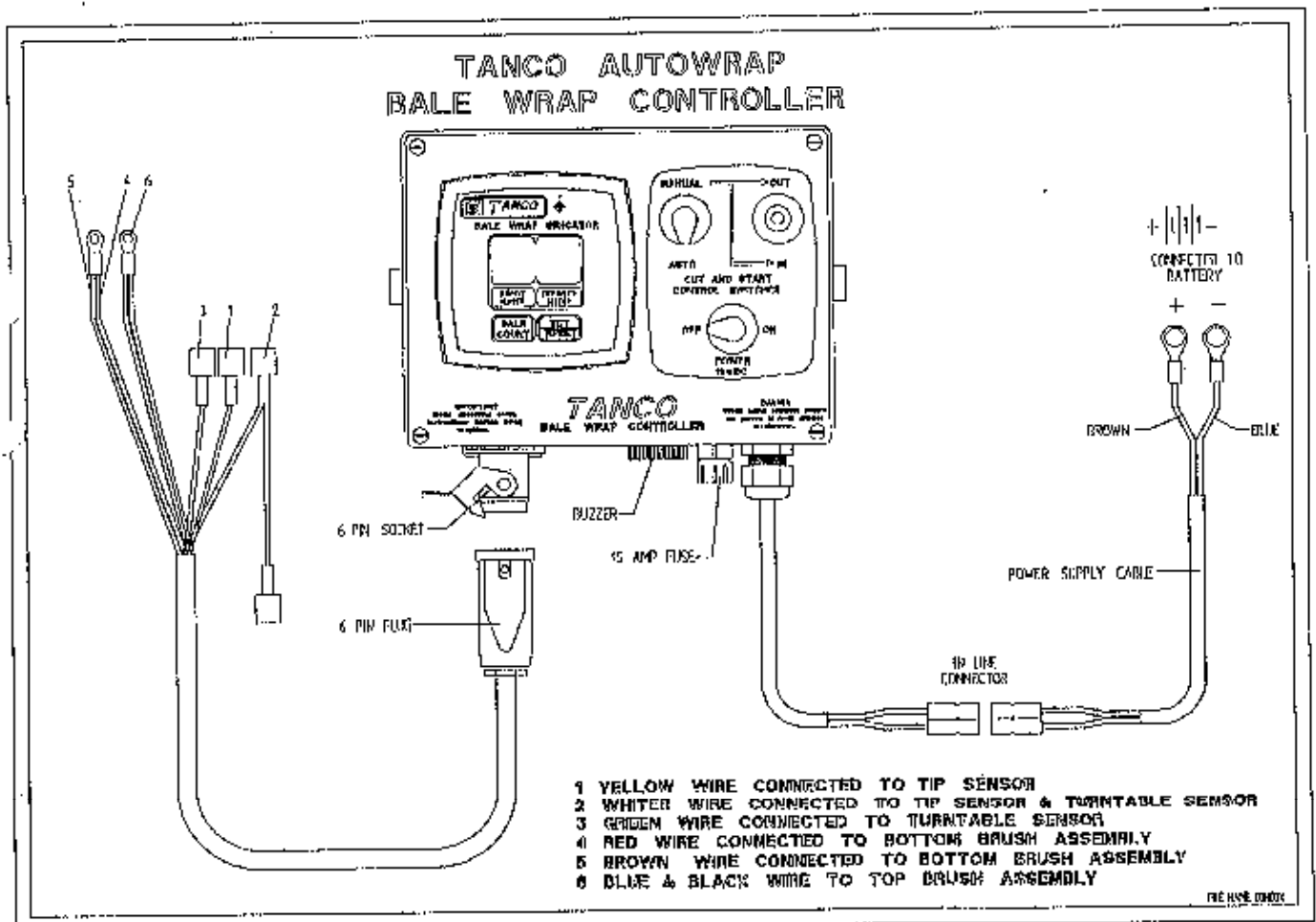
Connect direct to battery as per operating instructions and switch on. The programming of the Automatic Bale Wrap Controller is easily done by following the steps outlined below:

Once the unit is switched on, the number of required turntable revolutions appears on the right hand display. To change this press and hold the "hold to set" button, see fig. 1, then press the "set/reset" button. The first digit of the number will then blink and count from 0-9. Release the "set/reset" button at the required number. By pressing the "set/reset" again the second digit can be changed.

The monitor counts the number of bales per batch and the cumulative total. To see these, press the "bale count" button. The first number to appear is the batch total. If the button is held down for 10 seconds, a line will appear on the display, followed by the cumulative number wrapped. The batch count can be reset to 0 by holding the "bale count" button down and pressing the "set/reset" once. The cumulative total cannot be returned to zero.

To enable you to understand how the controller works, here is a brief resume of its functions.

- (1) After two revolutions of the turntable the actuator pushed open the Cut and Start, this action takes 8.5 secs until the latch engages, then after 6 revolutions of the turntable the actuator closes for a period of 5.5 seconds and stops in the rest position. When the turntable is tipped, the magnet operates the sensor which activates the linear actuator which closes fully and in doing so, trips the latch releasing the gripper arm which slams closed under the spring pressure, cutting the film and, at the same time gripping the film for the next bale



TANCO AUTOWRAP 1994 DRIVE BELT TENSIONING SYSTEM

BELT TENSIONING PROCEDURE

1. CHECK THAT HYDRAULIC MOTOR MOUNTING BRACKET IS SECURE IN POSITION.
2. LOOSEN M10 BOLT WHICH CLAMPS BELT TENSIONER BODY TO MOTOR MOUNT.
3. TENSION BELT BY ADJUSTING TENSIONER USING SPANNER IN DIRECTION OF ARROW "X" UNTIL SETTING OF 30 IS REACHED.
4. RE-TIGHTEN M10 BOLT TO SECURE TENSIONER IN POSITION.

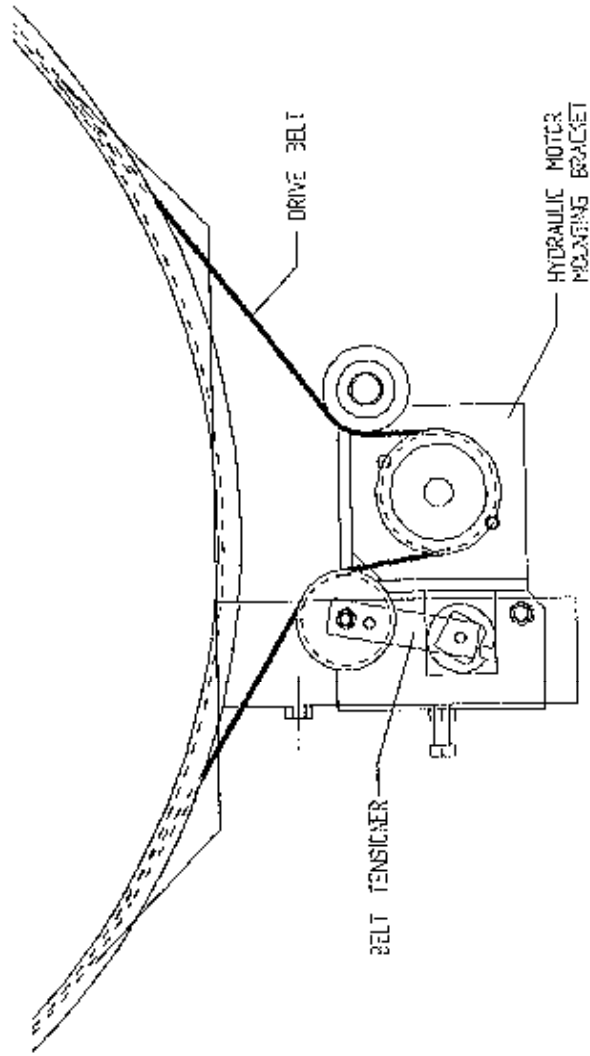
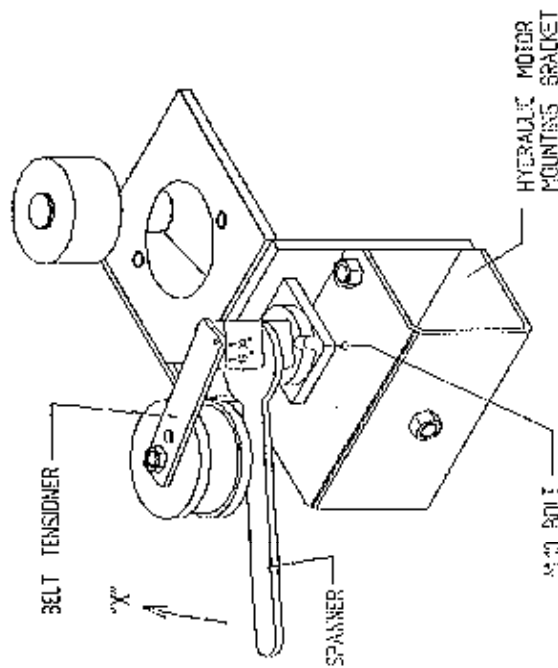
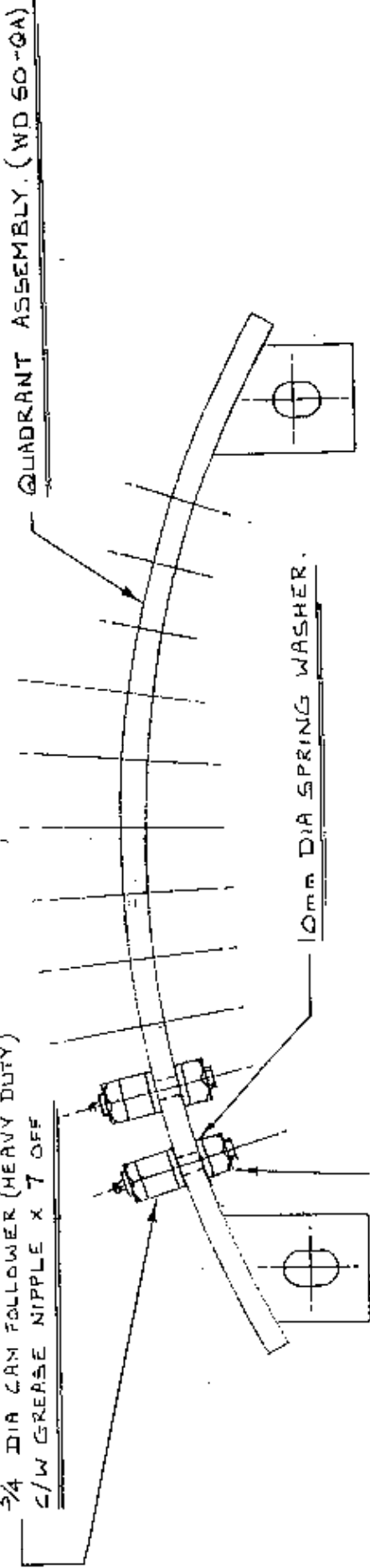


FIG. 3

NOTE:

WHEN FITTING $\frac{3}{4}$ " DIA CAM FOLLOWERS TO QUADRANT ASSEMBLY IT IS NECESSARY TO TORQUE NUTS TO 26 FT/LB.

$\frac{3}{4}$ " DIA CAM FOLLOWER (HEAVY DUTY)
C/W GREASE NIPPLE X 7 OFF



PLAN VIEW OF QUADRANT ASSEMBLY.

NOTE:

ENSURE THAT M20 HEX HD BOLT X 110 mm LONG USED TO MOUNT 4" DIA SUPPORT WHEELS ON TURNABLE ASSEMBLY IS POSITIONED WITH BOLT HEAD TO INSIDE TO AVOID FOULING $\frac{3}{4}$ " DIA CAM FOLLOWER.

TANCO AUTOWRAP (1994 MODEL)

QUADRANT ASSEMBLY INSTRUCTIONS.

Brake Timing Instructions.

The correct setting of the indexing system is essential to ensure proper bale rotation and correct film overlap. The indexing shaft is fitted with a brake to hold the bale in position after it has rotated. The engaging and disengaging of the brake is actioned by the brake trailing arm roller riding over the brake ramp, releasing the brake and allowing the indexing shaft to rotate. It is essential that the brake is released when the sprocket of the indexing shaft engages with the first cam follower and that it is reapplied when the sprocket releases from the last cam follower. This is factory preset and should only require occasional checking or adjustment. Adjustment of this timing is as follows.

1. With a 17mm spanner, slacken the clamping bolt under the drive belt tensioner until free. This will allow manual rotation of the turntable.
2. The brake spring is extended so that there is a 0.50mm gap between its coils (Fig 2.).
3. Set the gap between the brake trailing arm roller and the floor to 5 - 7 (fig. 1). Note: This gap will decrease as the brake lining wears. If the spring is adjusted this distance must also be reset.
4. Adjust the brake trailing arm (fig 3.A) so that the brake disengages as the leading tooth of the indexing sprocket passes over the first cam follower. (See Fig 3.B). As a rule this is when the brake trailing arm roller is half way up the slope of the ramp.
5. Run the sprocket across the cam followers. Two settings should be checked;
(i) That the gap between the sprocket and cam follower is 4mm (fig 4.). To adjust this remove shims under the quadrant assembly.
(ii) That the clearance between the sprocket and the quadrant is 2 - m (Fig 5.) The quadrant assembly can be moved in or out to adjust.
6. Adjust the long brake ramp so that the brake disengages as the bottom sprocket tooth passes over the last cam follower. (Fig 6.).
7. Repeat this procedure on the opposite quadrant.

BRAKE TIMING INSTRUCTIONS

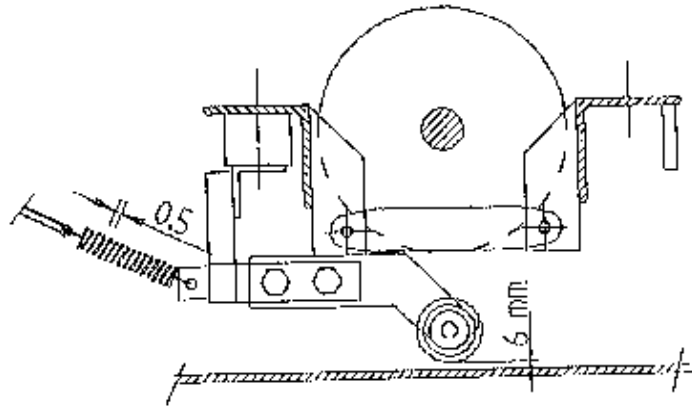
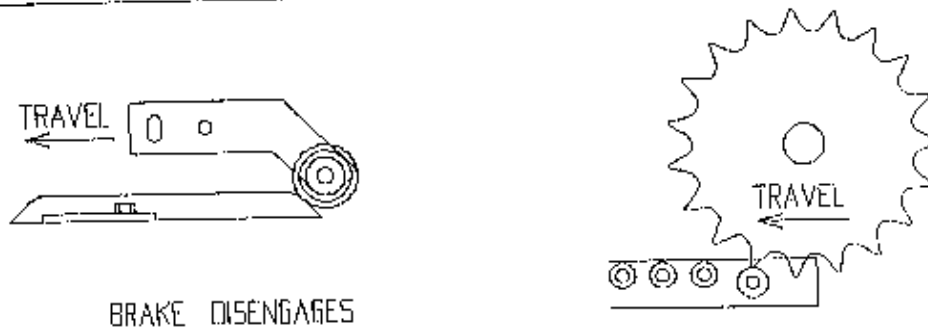
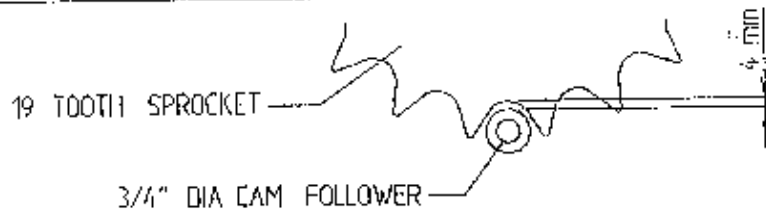


FIG 2



BRAKE DISENGAGES

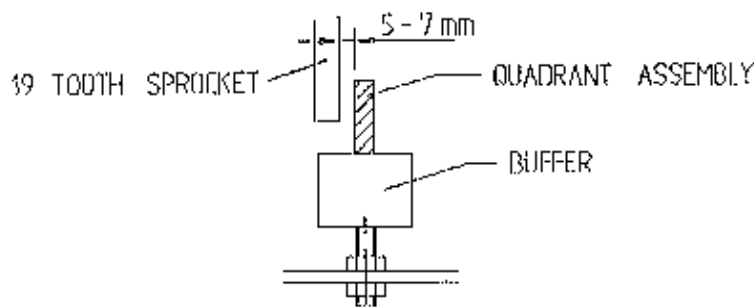
FIG 3



19 TOOTH SPROCKET

3/4" DIA CAM FOLLOWER

FIG 4

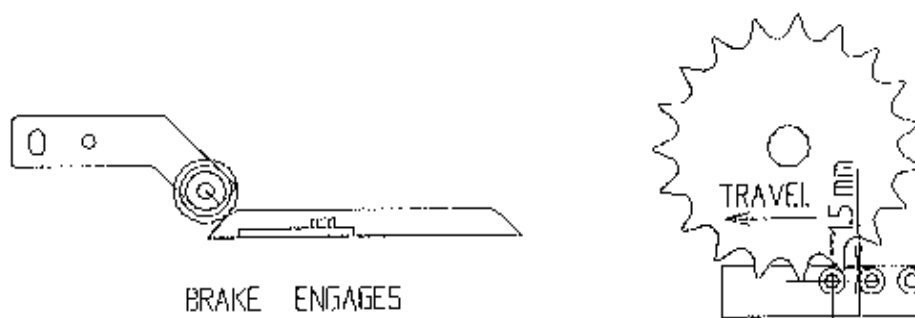


19 TOOTH SPROCKET

QUADRANT ASSEMBLY

BUFFER

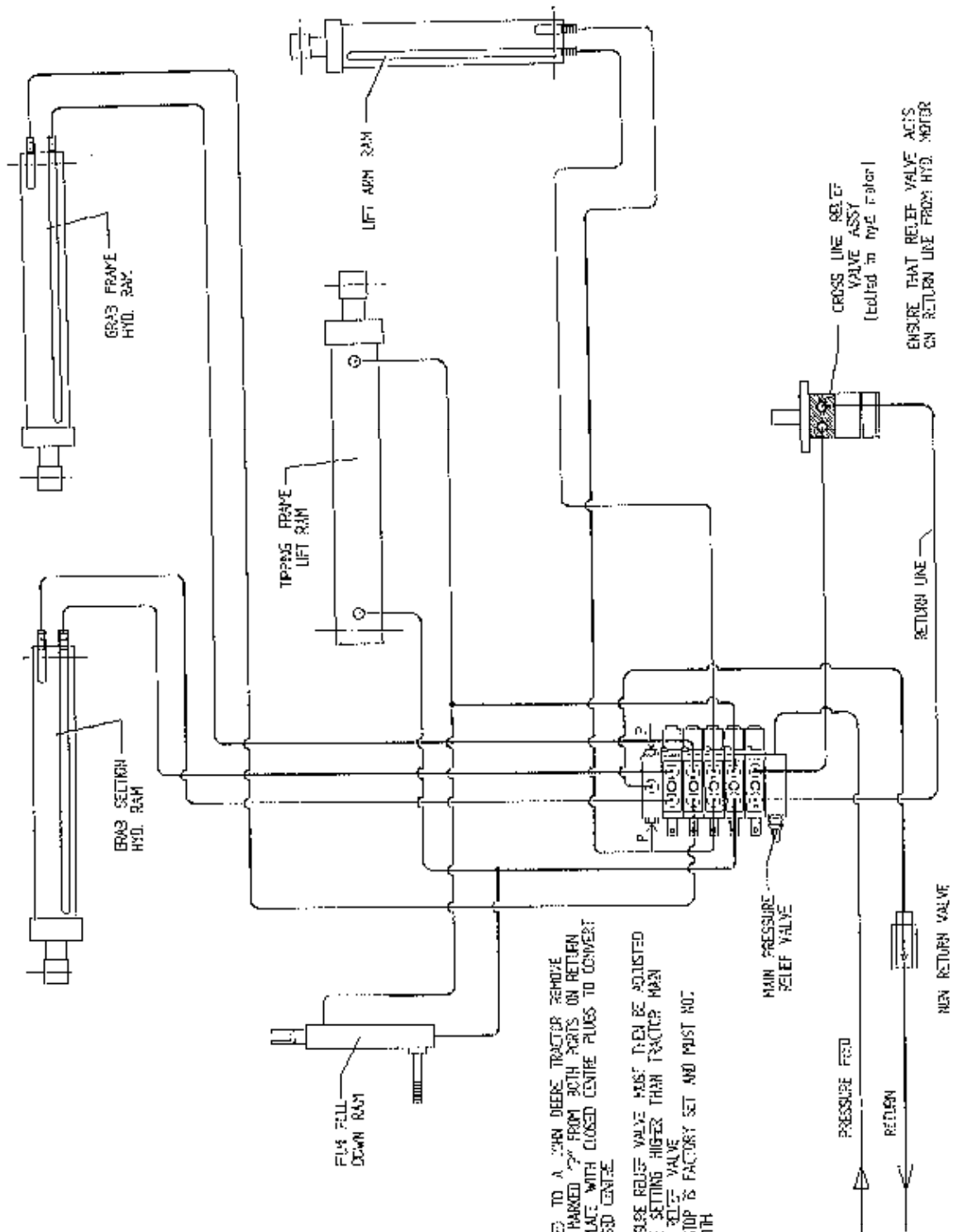
FIG 5



BRAKE ENGAGES

FIG 6

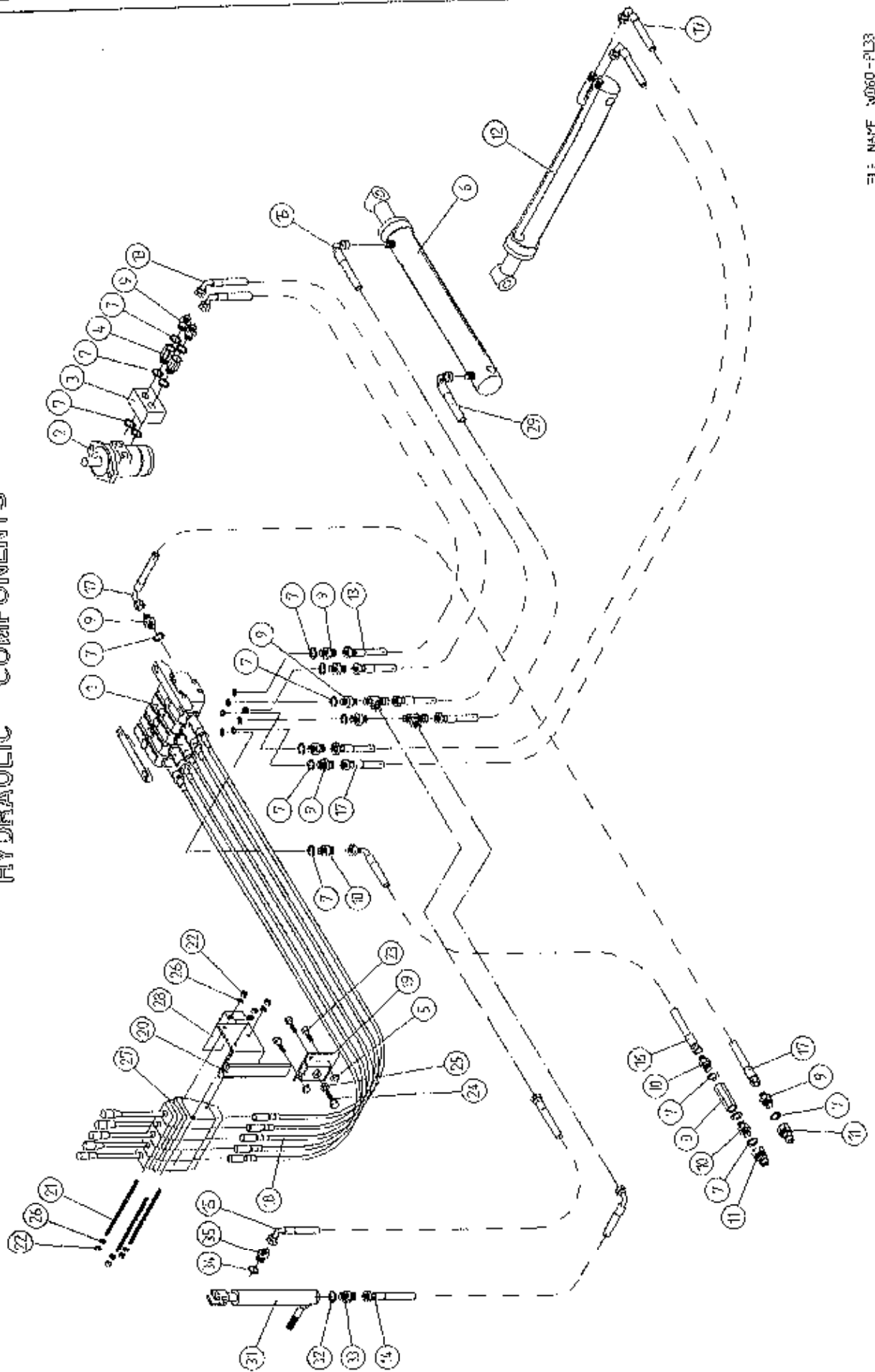
TANCO AUTOWRAP 1250 S MODEL HYDRAULIC CIRCUIT DIAGRAM



NOTE:
 (A) WHEN CONVERTED TO A JOHN DEERE TRACTOR REMOVE EXISTING PLUGS MARKED "P" FROM BOTH PORTS ON RETURN PLATE AND RE-PLATE WITH CLOSED CENTRE PLUGS TO CONVERT VALVES TO CLOSED CENTRE.
 (B) THE MAIN PRESSURE RELIEF VALVE MUST THEN BE ADJUSTED TO A PRESSURE SETTING HIGHER THAN TRACTOR MAIN PRESSURE RELIEF VALVE.
 (C) SPEED VALVE STOP IS FACTORY SET AND MUST NOT BE TAPERED WITH

ENSURE THAT RELIEF VALVE ACTS ON RETURN LINE FROM HYD. MOTOR

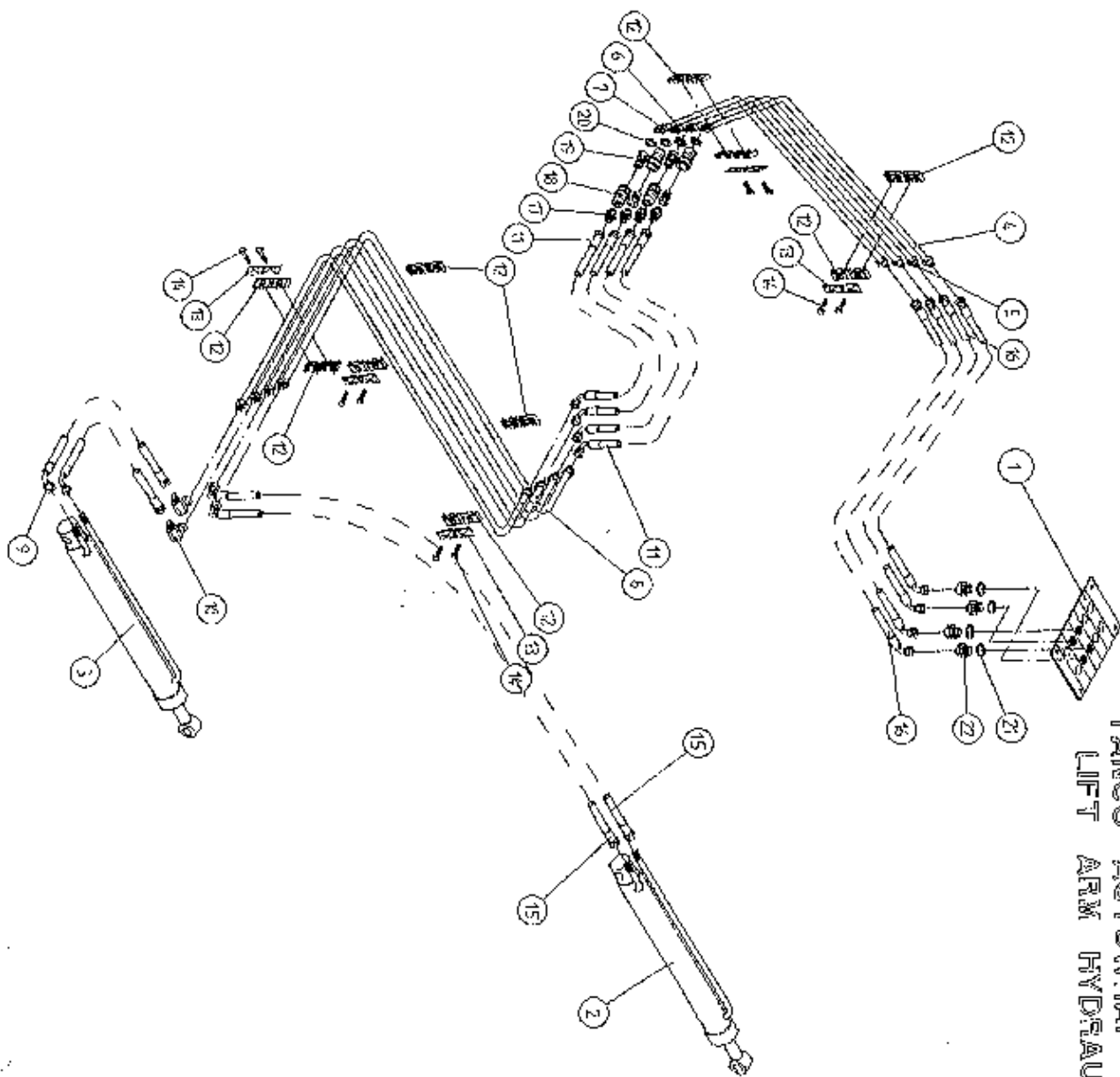
TANCO AUTOWRAP 1250 S TRAILED MODEL 1994
HYDRAULIC COMPONENTS



TANCO AUTOWRAP 1250 S MODEL (TRAILED) 1994
HYDRAULIC COMPONENTS (DIN)
PARTS LIST

ITEM NO.	DESCRIPTION	QTY.	PART-NO
1	5 BANK SPOOL VALVE (DIN)	1	Z01-03-018D5
2	HYDRAULIC MOTOR (C.L)	1	Z01-02-AR75
3	CROSS LINE RELIEF VALVE	1	Z01-03-002
4	1/2" BSP BOTTOM BANJO BOLT (SPECIAL)	2	Z01-03-002B
5	M10 LOCKNUT	3	Z23-10
6	HYD. RAM (FOR TIPPING FRAME)	1	Z01-01-AR687
7	1/2" DOWTY WASHER	18	Z01-04-03
8	1/2" NON RETURN VALVE	1	Z01-017
9	1/2" X 3/8" ADAPTOR	10	Z01-06-06-08
10	1/2" X 1/2" ADAPTOR	3	Z01-06-08-08
11	1/2" MALE END Q/R COUPLING	2	Z01-15-081
12	HYD. RAM (FOR LIFT ARM)	1	Z01-01-AW
13	96" ST/90 3/8" D/W HOSE	2	Z38-R2-96-S9
14	60" ST/90 3/8" D/W HOSE	1	Z38-R2-60-S9
15	72" ST/90 3/8" D/W HOSE	2	Z38-R2-72-S9
16	108" ST/90 1/2" S/W HOSE	1	Z12-R1-108-S9
17	108" ST/90 3/8" D/W HOSE	3	Z38-R2-108-S9
18	3 1/2" METER ACTUATOR CABLES	3	Z004-03-0075
19	ACTUATOR MTG. BRACKET (LOWER)	1	WD65-AML
20	ACTUATOR MTG. BRACKET (UPPER)	1	WD65-AMU
21	TIE BOLT (M8 X 325MM LONG)	3	WSB325
22	M8 HEX NUT	6	Z18-08
23	M10 HEX HD. SETS X 40MM LONG	3	Z26-064S
24	M12 HEX HD. SET X 30MM LONG	1	Z26-082S
25	M12 HEX NUT	1	Z18-12
26	8MM DIA SPRING WASHER	6	Z12-02-08
27	ACTUATOR LEVERS	3	Z004-03-009
28	STICKER MOUNTING PLATE	1	WD60-794
29	60" ST/90 3/8" D/W HOSE	1	Z38-R2-60-S9
30	3/8" FEMALE X 1/2" MALE/MALE "T" PIECE	2	Z01-12-002
31	HYDRAULIC RAM D/A	1	Z01-01-AW25
32	3/8" DOWTY WASHER	1	Z01-04-02
33	3/8" X 3/8" ADAPTOR FITTED WITH 0.06" RESTRICTOR	1	Z01-03-40
34	1/4" DOWTY WASHER	1	Z01-04-01
35	1/4" X 3/8" ADAPTOR	1	Z01-06-04-06

TANCO AUTOWRAP 1250S/1250A MODEL
LIFT ARM HYDRAULIC COMPONENTS

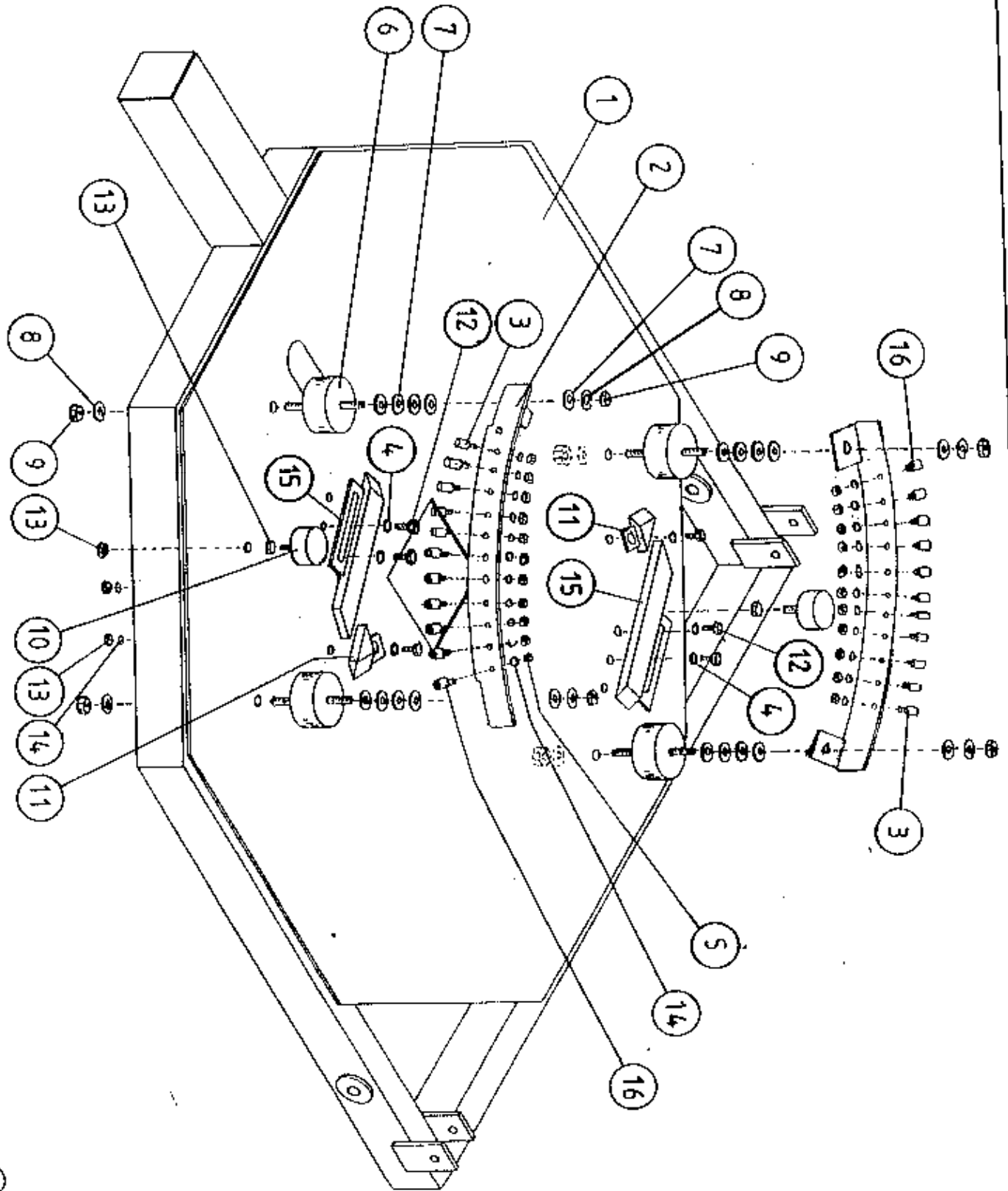


WTD 625 - PL3

TANCO AUTOWRAP 1250S/1250A MODEL 1994
LIFT ARM HYDRAULIC COMPONENTS
PARTS LIST

ITEM NO.	DESCRIPTION	QTY	PART-NO
1.	5 BANK SPOOL VALVE (DIN) LEVERS	1	Z01-03-018DS
2.	HYDRAULIC RAM D/A	1	Z01-01-140
3.	HYDRAULIC RAM D/A	1	Z01-01-140S
4.	HYDRAULIC PIPE (CHASSIS)	1	WD625-070
5.	HYDRAULIC PIPE (CHASSIS)	1	WD625-071
6.	HYDRAULIC PIPE (CHASSIS)	1	WD625-072
7.	HYDRAULIC PIPE (CHASSIS)	1	WD625-073
8.	HYDRAULIC PIPE (LIFT ARM)	4	WD625-HP
9.	12" ST/90 3/8" D/W HOSE	2	Z38-R2-12-S9
10.	3/8" MALE/FEMALE 90 ELBOW	2	Z01-14-015
11.	36" ST/90 3/8" D/W HOSE	4	Z38-R2-36-S9
12.	PIPE CLAMP TOP/BOTTOM (DOUBLE)	10	Z01-24-26
13.	TOP CLAMPING PLATE	10	Z01-24-28
14.	M8 HEX HD BOLT X 35MM LONG	10	Z26-042B
15.	48" ST/90 3/8" D/W HOSE	2	Z38-R2-48-S9
16.	24" ST/90 3/8" D/W HOSE	4	Z38-R2-24-S9
17.	3/8" X 3/8" ADAPTOR	4	Z01-06-06-06
18.	3/8" FEMALE Q/R COUPLING	4	Z01-15-062
19.	3/8" MALE Q/R COUPLING	4	Z01-15-061
20.	3/8" DOWTY WASHER	4	Z01-04-02
21.	1/2" DOWTY WASHER	4	Z01-04-03
22.	1/2" X 3/8" ADAPTOR	4	Z01-06-06-08

TANCO AUTOWRAP 1994 INDEXING QUADRANT ASSY (50% OVERLAP WITH 750mm WIDE FILM ROLL)

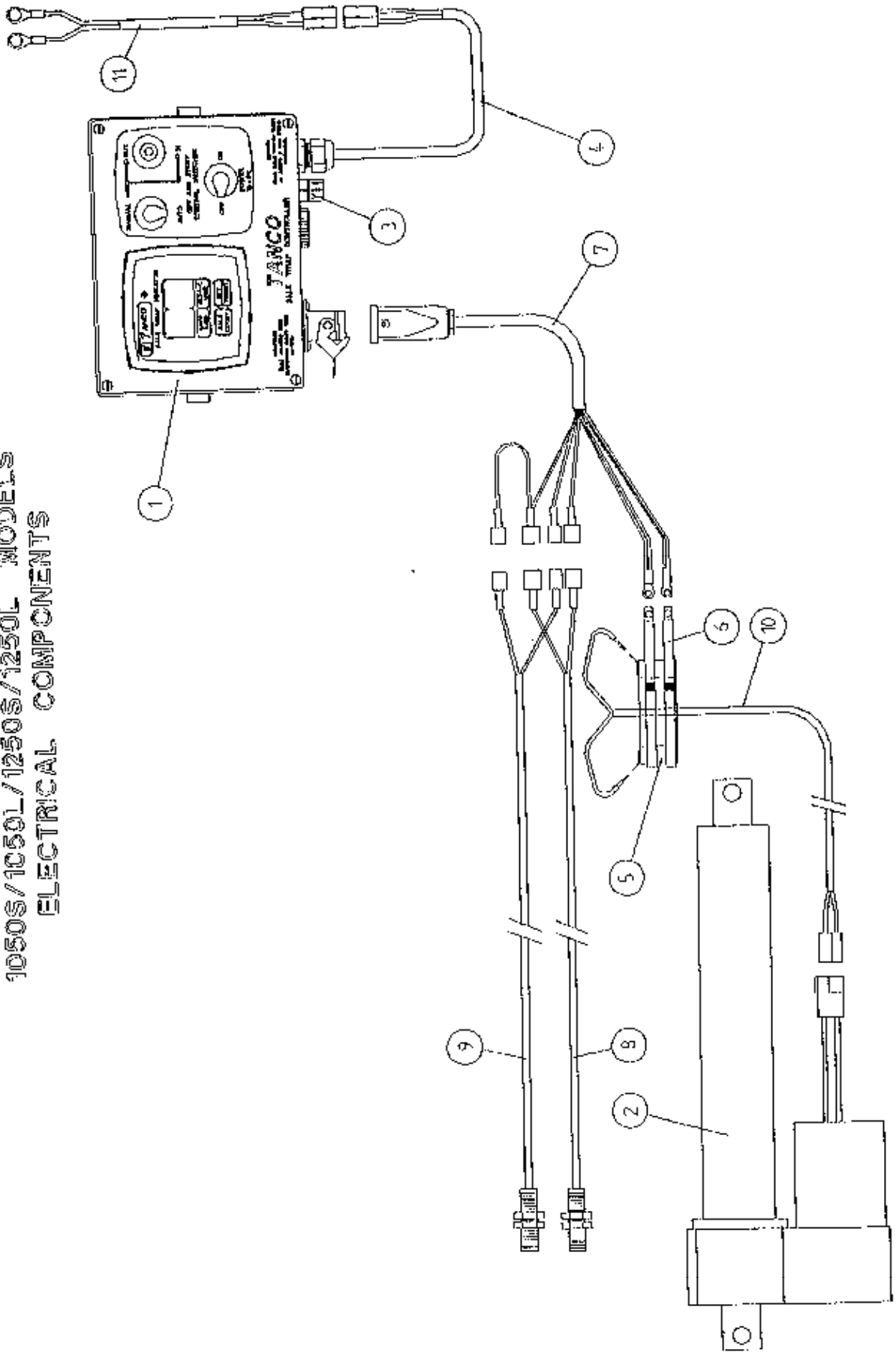


TANCO AUTOWRAP 1250A/1250LRC 1994
PARTS LIST

INDEXING QUADRANT ASSEMBLY (50% OVERLAP) WITH 750MM WIDE FILM ROLL

ITEM NO.	DESCRIPTION	QTY	PART-NO.
1.	TIPPING FRAME ASSY	1	WD60-TF
2.	QUADRANT ASSY	2	WD60-QA
3.	3/4" DIA CAM FOLLOWER (HEAVY DUTY) C/W GREASE NIPPLE	18	Z06-425
4.	10MM DIA FLAT WASHERS	6	Z11-02-10
5.	3/8" UNF LOCKNUTS (BINX)	22	Z20-12
6.	RUBBER BUFFER 100MM DIA X 40MM LONG	4	Z40-22
7.	16MM DIA FLAT WASHERS	18	Z10-02-16
8.	16MM DIA SPRING WASHERS	8	Z12-02-16
9.	M16 HEX NUT	8	Z18-16
10.	RUBBER BUFFER 50MM DIA X 25MM LONG	2	Z40-23
11.	CAM ASSY (SHORT)	2	WD623-CAS
12.	M10 HEX HD SET X 30MM LONG	6	Z26-062S
13.	M10 HEX NUT	8	Z18-10
14.	10MM DIA SPRING WASHER	26	Z12-02-10
15.	CAM ASSY (LONG)	2	WD623-CAL
16.	1" DIA CAM FOLLOWER C/W GREASE NIPPLE	2	Z06-426

TANCO AUTOWRAP 200SL/400S/500S
 1050S/1050L/1250S/1250L MODELS
 ELECTRICAL COMPONENTS



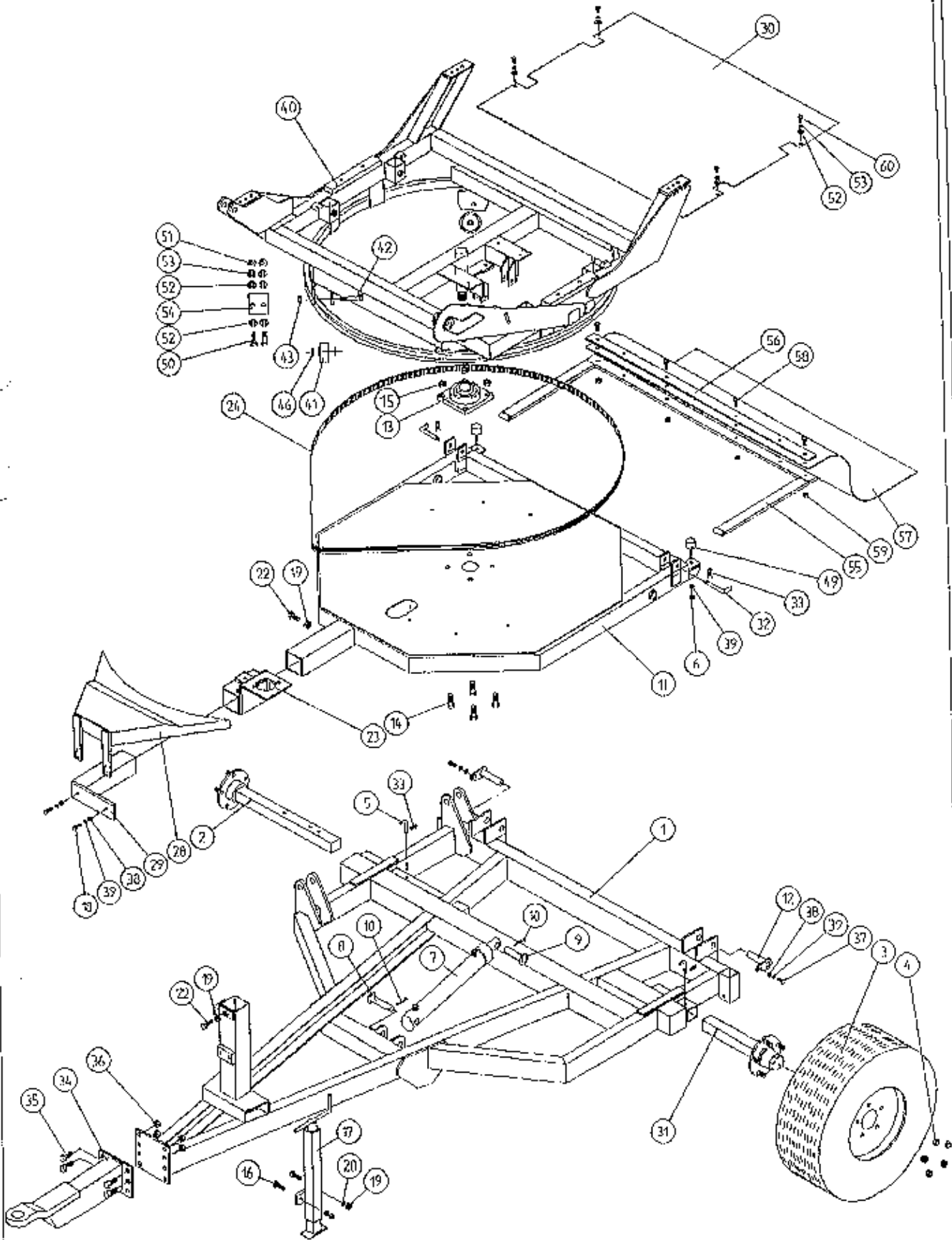
9227J

TANCO AUTOWRAP 200SL/400S/500S/1050S/1050L/1250S/1250L

ELECTRICAL COMPONENTS
PARTS LIST

ITEM NO.	DESCRIPTION	QTY	PART-NO
1.	CONTROL BOX	1	D6049
2.	WARNER LINEAR ACTUATOR	1	ZD605-510
3.	1 1/4" FUSE HOLDER	1	ZD606-100
4.	MAIN FLY LEAD FOR CONTROLLER	1	ZD606-060
5.	SLIP RING ASSY.	1	ZD605-308
6.	BRUSHES	2	ZD605-302
7.	7 CORE CABLE C/W HEARTING PLUG	1	D605-7C
8.	ROTATING SENSOR	1	ZD606-RS
9.	TIP SENSOR	1	ZD606-TS
10.	TWO CORE CABLE FOR SLIP RING	1	D605-02C
11	MAIN BATTERY LEAD FOR CONTROLLER	1	ZD606-030

TANCO AUTOWRAP 1250 MODELS MAIN ASSEMBLY



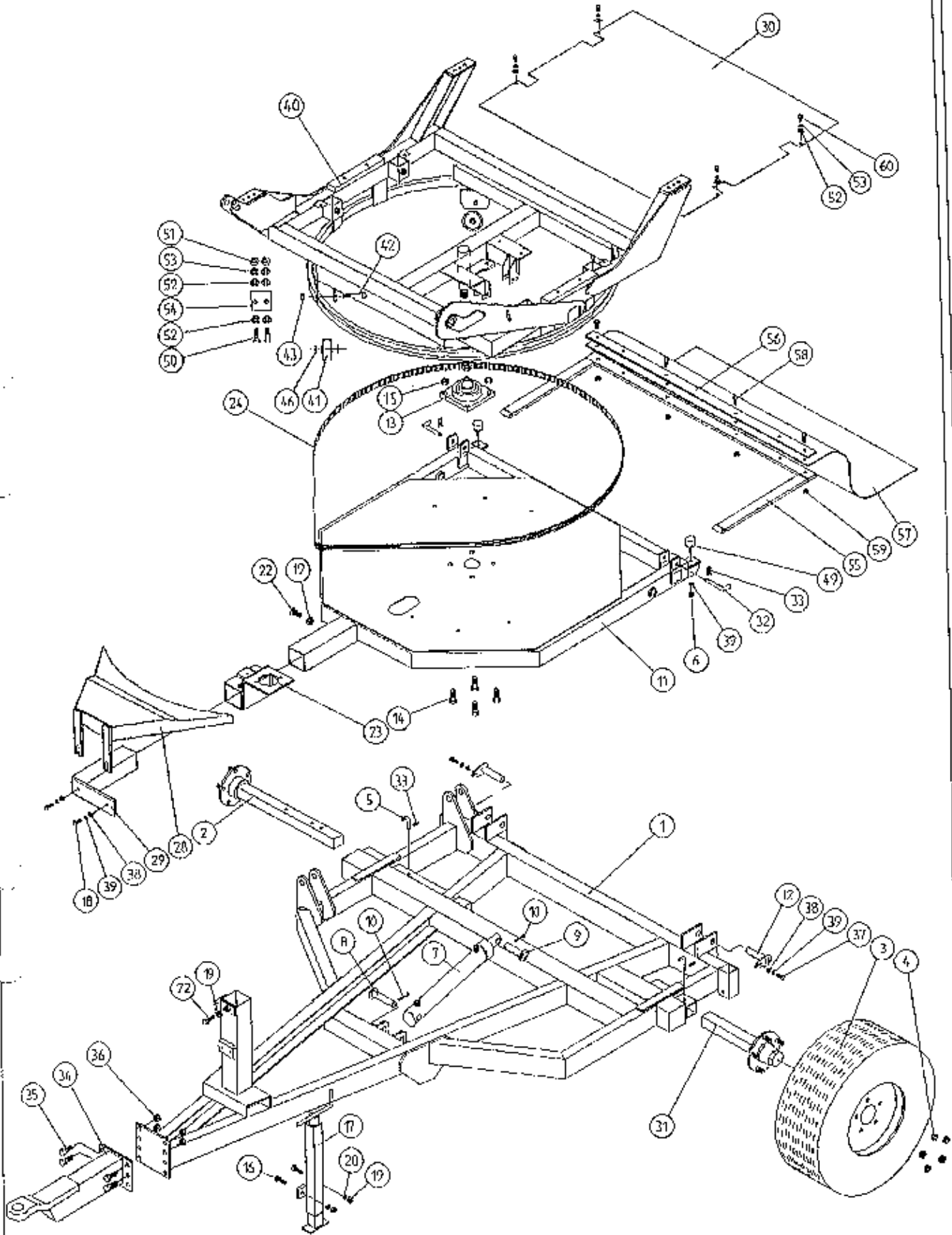
WD610 - PLS

TANCO AUTOWRAP 1250 MODEL
MAIN ASSEMBLY

PARTS LIST

ITEM NO.	DESCRIPTION	QTY	PART-NO.
		1	WD60-CHA
1.	CHASSIS ASSY	1	Z04-033
2.	STUB AXLE (LONG)	2	Z04-031
3.	WHEELS	10	Z04-0031
4.	WHEEL NUTS	1	Z03-22-AW82
5.	BISSEL PIN	2	Z18-10
6.	M10 HEX NUT	1	Z01-01-R687
7.	HYD. RAM	1	Z03-02-330
8.	RAM BOTTOM PIVOT PIN	1	Z03-03-50
9.	RAM TOP PIVOT PIN	2	Z03-21-29
10.	2" X 1/4" SPLIT PIN	1	WD60-TF
11.	TIPPING FRAME ASSY	2	Z03-01-905
12.	TIPPING FRAME PIVOT PIN C/W GREASE NIPPLE	1	Z06-49
13.	2" DIA FLANGE BEARING	4	Z30B-064
14.	5/8" UNF HEX HD SET X 2" DIA	4	Z20-10
15.	5/8" UNF LOCKNUT	2	Z26S-084
16.	M12 HEX HD SET X 40MM LONG	1	WD60-JA
17.	SCREW JACK ASSY	2	Z26-023
18.	M10 HEX HD ST X 30MM LONG	5	Z18-12
19.	M12 HEX NUT	2	Z12-02-12
20.	12MM DIA SPRING WASHER	2	Z26-082S
22.	M12 HEX HD SET X 30MM LONG	1	WD60-HMB
23.	HYD MOTOR MOUNTING ASSY	1	Z05-02-AW2
24.	170" LONG X 1/2" PITCH X 1" WIDE TOOTHED BELT	1	WD0-HMG
28.	HYD MOTOR GUARD ASSY	1	WD60-HAMG
29.	HYD MOTOR GUARD MOUNTING BRACKET	1	WD612-022
30.	TURN TABLE COVER PLATE	1	Z04-032
31.	STUB AXLE (SHORT)	2	Z03-22-AW100
32.	BISSEL PIN	4	Z36-02
33.	4MM "R" CLIP	1	WD65-HIT
34.	HITCH ASSY	4	Z26-123S
35.	M16 HEX HD SET X 45MM LONG	4	Z23-16
36.	M16 LOCKNUTS	2	Z26-061S
37.	M10 HEX HD SET X 25MM LONG (TUFLOCK)	4	Z11-02-10
38.	10MM DIA MACHINED FLAT WASHER	5	Z12-02-10
39.	10MM DIA SPRING WASHER	1	WD610-TA
40.	TURNTABLE ASSY	4	Z006-466
41.	SUPPORT WHEELS (4" DIA)	4	Z03-22-AW/AX
42.	AXLE ASSY C/W GREASE NIPPLE	4	Z39-60
43.	M20 LOCKNUTS	3	Z23-30
46.	SPACER	2	Z18-12
49.	BUFFER 50MM LONG DIA X 40MM LONG	4	Z40-20
50.	M8 HEX HD SET X 20MM LONG	4	Z26-039SS
51.	M8 HEX NUT	4	Z18-08

TANCO AUTOWRAP 1250 MODELS MAIN ASSEMBLY

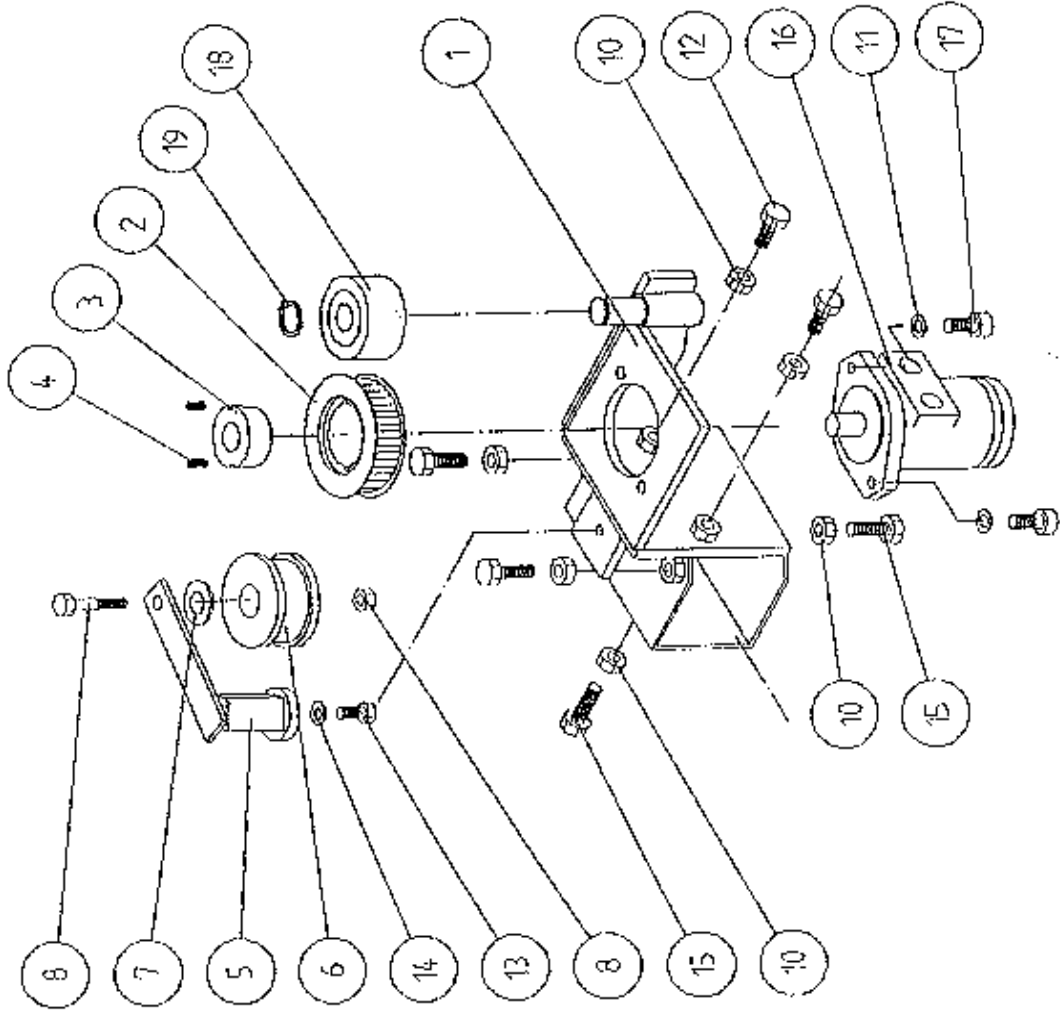


WD010 - PL5

TANCO AUTOWRAP 1250 MODEL
MAIN ASSEMBLY
PARTS LIST

ITEM NO.	DESCRIPTION	QTY	PART-NO.
52.	8MM DIA FLAT WASHER (MUD FLAT)	8	Z11-02-08
53.	8MM DIA SPRING WASHER	8	Z12-02-08
54.	SCRAPER	2	WD60-70S
55.	RUBBER MAT MOUNTING ASSY	1	WD63-MMF
56.	CLAMPING PLATE	1	WD63-1300
57.	BALE MAT	1	Z05-02AW
58.	M8 HEX HD BOLT X 50MM LONG	4	Z26-045B
59.	M8 LOCKNUTS	4	Z23-08
60.	M8 CHEESE HD ST X 20MM LONG	4	Z12-19-08-20

TANCO AUTOWRAP 1994 MODEL
HYDRAULIC MOTOR DRIVE ASSEMBLY



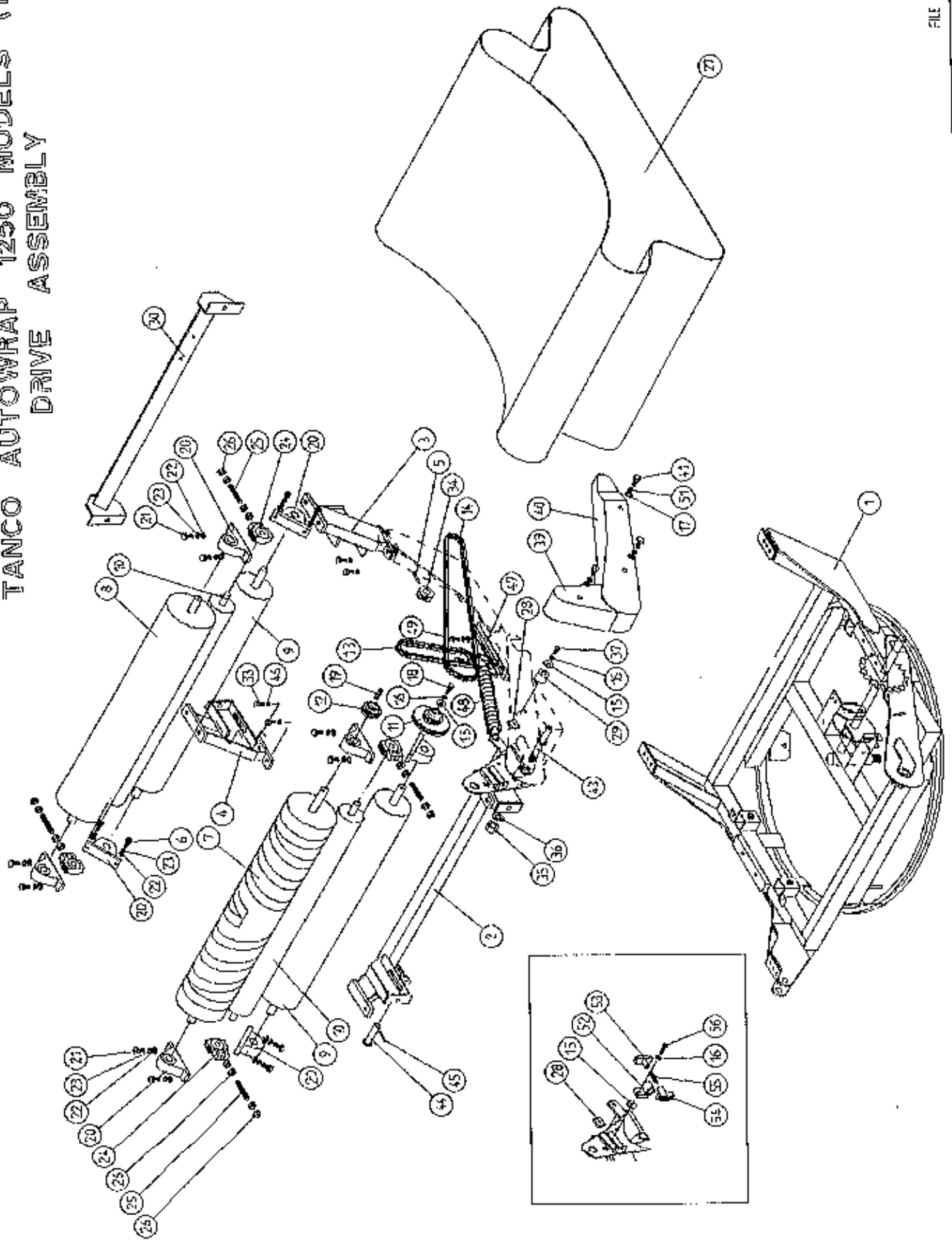
WD60-PL27

TANCO AUTOWRAP 1994 MODEL
HYDRAULIC MOTOR DRIVE ASSEMBLY

PARTS LIST

ITEM NO.	DESCRIPTION	QTY.	PART-NO.
1.	HYDRAULIC MOTOR MOUNTING ASSY.	1	WD65-HMB
2.	4" DIA X 1/2" PITCH TOOTHED PULLY	1	Z09-005-AW1
3.	TAPER LOCK BUSH TO SUIT 1" DIA SHAFT	1	Z09-005-AW2
4.	M10 STUDS X 15MM	2	Z28-01
5.	ROSTA TENSIONING UNIT ARM	1	Z06-454
6.	STEPPED ROLLER C/W BEARINGS	1	Z06-456
7.	SPACER	1	WD60-798
8.	M10 HEX HD BOLT X 60MM LONG	1	Z26-067B
9.	M10 LOCKNUT	1	Z32-10
10.	M12 HEX NUT	6	Z18-12
11.	12MM DIA SPRING WASHER	2	Z12-02-12
12.	M12 HEX HD SET X 30MM LONG	2	Z26-082S
13.	M10 HEX HD SET X 25MM LONG (TUFLOCK)	1	Z26-061S
14.	10MM DIA SPRING WASHER	1	Z12-02-10
15.	M12 HEX HD SET X 40MM LONG	6	Z26-084S
16.	HYDRAULIC MOTOR C.L.	1	Z01-02-AR75
17.	M12 SOCKET HD SCREW X 30MM LONG	2	Z13-6-12X30
18.	ROLLER C/W BEARINGS	1	Z06-457
19.	CIRCLIP	1	Z28-525

TANCO AUTOWRAP 1250 MODELS (1994)
DRIVE ASSEMBLY

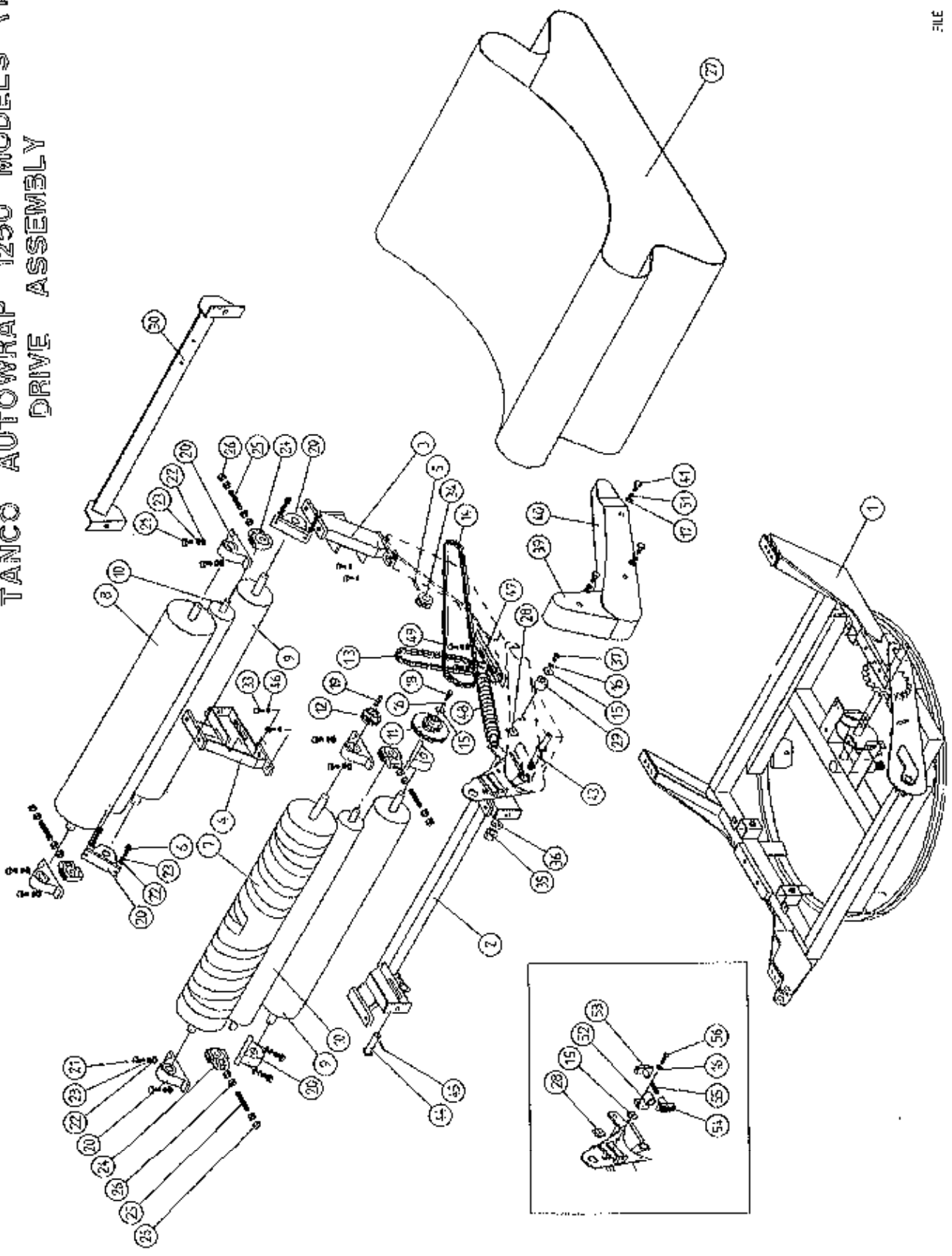


**TANCO AUTOWRAP 1250 MODEL 1994
DRIVE ASSEMBLY**

PARTS LIST

ITEM NO	DESCRIPTION	QTY	PART-NO
1.	TURNTABLE ASSY	1	WD610-TA
2.	ROLLER MOUNTING BRACKET (SWIVEL)	1	WD612-RMS
3.	ROLLER MOUNTING BRACKET (FIXED)	1	WD612-RM1
4.	ROLLER MOUNTING BRACKET (FIXED)	1	WD612-RM2
5.	5/16" DIA X 45MM LONG TENSION PIN	1	Z03-20-022
6.	M14 HEX HD SET X 50MM LONG	8	Z26-104S
7.	BIG ROLLER ASSY (DRIVE)	1	WD610-DRA
8.	BIG ROLLER ASSY (IDLER)	1	WD610-BRI
9.	ROLLER ASSY (IDLER)	2	WD65-BRI
10.	TRACKING ROLLER ASSY (LONG)	2	WD610-TRL
11.	38 TOOTH X 19 TOOTH X 1/2" PITCH DOUBLE DUPLES SPROCKET TO SUIT 08B-2 CHAIN	1	Z06-D610-1938
12.	19 TOOTH X 1/2" PITCH DUPLEX SPROCKET TO SUIT 08B-2 CHAIN	1	Z06-D610-19
13.	CHAIN 08B-2 1/2" PITCH DUPLEX X 63 PITCHES INCL. JOINER	1	Z09-AW-10
14.	CHAIN 08B-2 1/2" PITCH DUPLEX X 156 PITCHES INCL. JOINER	1	Z09-AW-20
15.	RETAINING COLLAR	2	WD623-071
16.	10MM DIA SPRING WASHER	3	Z12-02-10
17.	10MM DIA FLAT WASHER	5	Z10-02-10
18.	M10 HEX HD SET X 30MM LONG	1	Z26-062S
19.	5/16" KEY STEEL X 32MM LONG	1	WD623-K32
20.	1 1/4" PILLOW BLOCK BEARING	8	Z06-485
21.	M14 HEX HD SET X 45MM LONG	8	Z26-103S
22.	14MM DIA FLAT WASHER	24	Z11-02-14
23.	14MM DI SPRING WASHER	24	Z12-02-14
24.	SLIDING BEARING ST1	4	Z06-47ST
25.	M20 THREADED BAR X 135MM LONG	4	WD65-20TB
26.	M20 HEX NUTS	16	Z18-20
27.	BALE BELT 1000MM X 5150MM LONG	1	Z05-02AWV2-93
28.	LOCKING PLATE	1	WD623-060
29.	CHAIN TENSIONER ROLLER	1	WD60-CT
30.	CUT AND START MOUNTING FRAME	1	WD612-CSM
31.	LOCKING PLATE	2	WD623-060
32.	M14 HEX NUTS	8	Z18-14
33.	M12 HEX HD SET X 25MM LONG	4	Z26-081S
34.	15 TOOTH X 1.2" PITCH DUPLEX SPROCKET	1	Z06-AW125
35.	1" DIA UNC LOCKNUT	1	Z23-251
36.	1" H/D FLAT WASHER	2	Z10-02-25
37.	M10 HEX HD BOLT X 60MM LONG	1	Z26-066B
38.	M10 HEX HD BOLT X 80MM LONG	1	Z26-0692
39.	CHAIN GUARD (SMALL)	1	WD612-CGS
40.	CHAIN GUARD (LARGE)	1	WD612-CGL
41.	M10 HEX HD SET X 20MM LONG (TUFLOCK)	3	Z26-060ST
42.	STAR WASHER 1/2" DIA	3	Z10-02-121
43.	SPROCKET/BRACKET PIVOT SHAFT	1	WD610-71
44.	SWIVEL BRACKET PIVOT PIN J-50	1	Z03-03-50

TANCO AUTOWRAP 1250 MODELS (1994)
 DRIVE ASSEMBLY



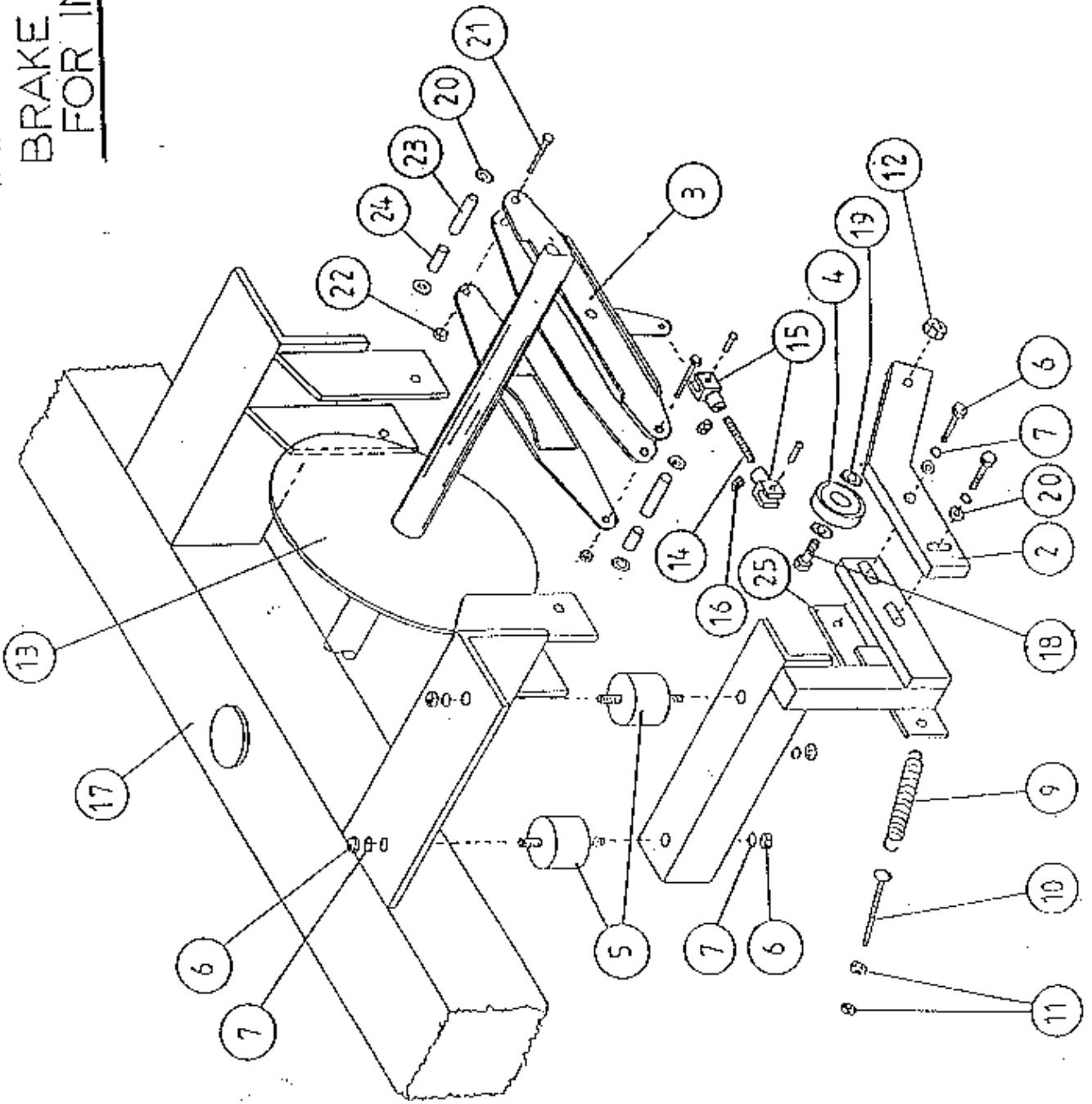
WD63-PL12

TANCO AUTOWRAP 1250 MODEL 1994
DRIVE ASSEMBLY

PARTS LIST

ITEM NO	DESCRIPTION	QTY	PART-NO.
45.	2" X 1/4" SPLIT PIN	1	Z03-21-29
46.	12MM DIA SPRING WASHER	4	Z12-02-12
47.	SPRING ANCHOR BRACKET	1	WD612-SAB
48.	ROLLER MOUNTING SWIVEL TENSION SPRING	1	Z07-21
49.	M12 HEX HD SETS X 30MM LONG	2	Z26-082S
50.	12MM DIA FLAT WASHER	2	Z10-02-12
51.	1/2" DIA STAR WASHER	3	Z11-02-10
52.	CHAIN TENSIONER BODY	1	WD610-CTB
53.	CHAIN TENSIONER BLOCK ASSY INNER	1	WD610-TB1
54.	CHAIN TENSIONER BLOCK ASSY OUTER	1	WD610-TB0
55.	SPRING 14.5MM O.D. X 1.6MM WIRE X 60MM LONG	1	Z07-48
56.	M10 HEX HD SET X 40MM LONG	1	Z26-064S

TANCO AUTOWRAP 1994
BRAKE ARRANGEMENT
FOR INDEXING SHAFT

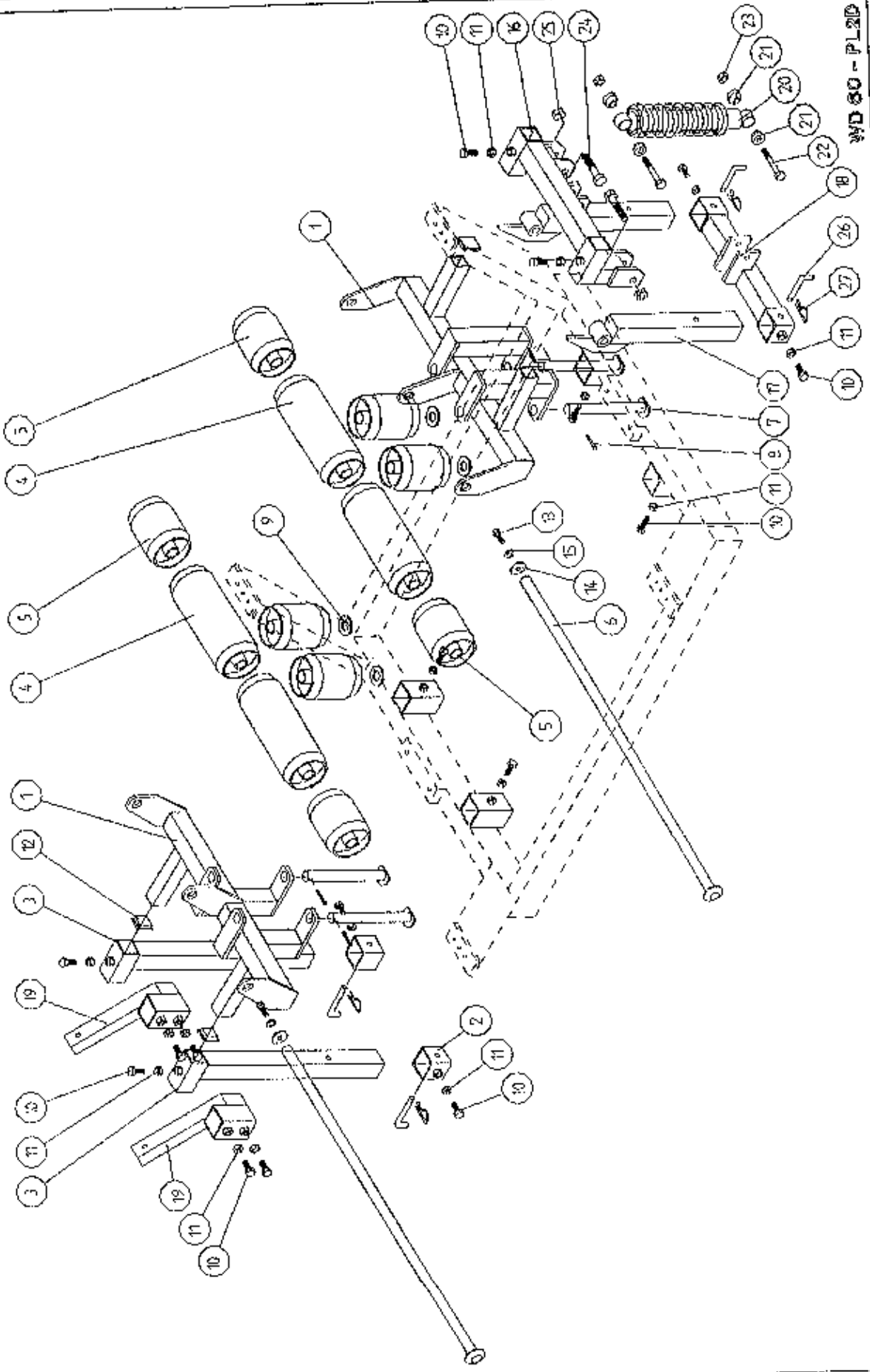


TANCO AUTOWRAP 1994
BRAKE ARRANGEMENT FOR INDEXING SHAFT

PARTS LIST

ITEM NO	DESCRIPTION	QTY	PART-NO
1.	CAM FOLLOWER MOUNTING BRACKET (UPPER)	1	WD60-CFMB
2.	CAM FOLLOWER MOUNTING BRACKET (LOWER)	1	WD60-804
3.	CALIPER DISC BRAKE UNIT	1	Z49-92
4.	BALL BEARING (6301)	1	Z49-92
5.	RUBBER BUFFER 50MM DIA X 30 LONG TYPE A	2	Z40-21
6.	M10 HEX NUTS	4	Z18-10
7.	10MM DIA SPRING WASHERS	6	Z12-02-10
8.	M10 HEX HD SET X 40 LONG	2	Z26-0645
9.	TENSION SPRING	1	Z07-05
10.	EYE BOLT (M8)	1	WD60-EB
11.	M8 HEX NUTS	2	Z18-08
12.	M12 LOCKNUT	1	Z23-12
13.	SPROCKET/SHAFT ASSY	1	WD65-SPR
14.	5/16" UNF THREADED BAR X 90MM LONG	1	WD60-806
15.	5/16" UNF CLEVIS C/W PIN & CLIP	2	Z49-33
16.	5/16" UNF HEX NUT	2	Z15-05
17.	TURN TABLE	1	WD60-TA
18.	M12 HEX HD SETS X 40MM LONG	1	Z26-0845
19.	12MM DIA FLAT WASHER	2	Z11-02-12
20.	10MM DIA FLAT WASHER	7	Z11-02-10
21.	3/8" UNF HEX HD SET X 3" LONG	2	Z31B-102
22.	3/8" UNF LOCK NUT	2	Z15-06
23.	SPACER 1/2" O.D. X 13/32" I.D. x 1 1/2" LONG	2	Z49-92-01
24.	SPACER 1/2" O.D. X 13/32" I.D. x 1/2" LONG	2	Z49-92-02
25.	CLAMPING PLATE		WD60-836

TANCO AUTOWRAP 1250 MODEL (1994)
 END ROLLER MOUNTING BRACKET ASSEMBLY

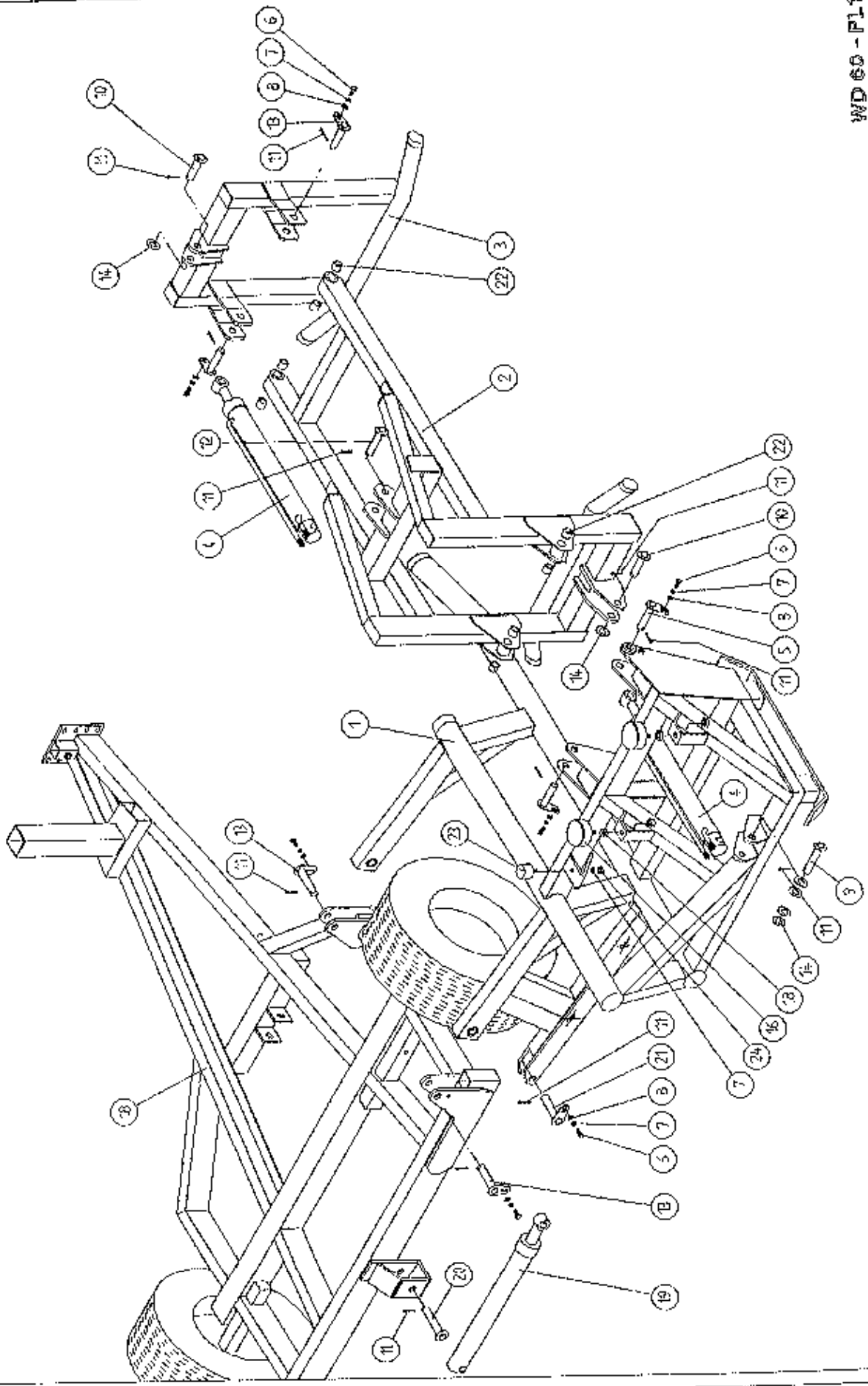


WD 60 - PL2D

TANCO AUTOWRAP 1250 MODEL 1994
END ROLLER MOUNTING BRACKET ASSY

ITEM NO.	DESCRIPTION	QTY	PART-NO
1.	ROLLER MOUNTING BRACKET	2	WD625-ERMI
2.	SOCKET ASSY LOWER	2	WD625-SA
3.	SOCKET ASSY UPPER	2	WD625-ERSA
4.	ROLLER ASSY (LONG)	4	WD625-LRA
5.	ROLLER ASSY (SHORT)	8	WD625-ERA5
6.	ROLLER PIVOT PIN (LONG)	2	WD625-PL
7.	ROLLER PIVOT PIN (SHORT)	4	WD625-ERPS
8.	1/4" DIA SPLIT PIN X 1 1/2" LONG	4	Z03-21-27
9.	1" HEAVY DUTY FLAT WASHER	4	Z10-02-25
10.	M12 HEX HD SET X 40MM LONG	16	Z26S-084
11.	M12 HEX NUT	16	Z18-12
12.	PLASTIC CAP	4	Z32-07
13.	M10 HEX HD SET X 25MM LOGN (TUFLOCK)	2	Z26-016S
14.	THRUST WASHER	2	WD623-071
15.	10MM DIA SPRING WASHER	2	Z12-02-10
16.	PIVOT BRACKET UPPER	1	WD625-PBU
17.	PIVOT BRACKET LOWER	1	WD625-PBL
18.	DAMPER BRACKET LOWER	1	WD625-DBL
19.	CUT AND START MOUNTING BRACKET	2	WD625-CSM
20.	DAMPER SPRING	1	Z07-60
21.	RUBBER SPACER	4	Z01-061
22.	M16 HEX HD BOLT X 80MM LONG	2	Z26-130B
23.	M16 LOCKNUT	2	Z23-16
24.	3/4" UNC HEX HD BOLT X 100MM	2	Z27-134B
25.	3/4" UNC HEX LOCKNUT	2	Z23-201
26.	BISSEL PIN	2	Z03-22-AW82
27.	4MM "R" CLIP	2	Z36-02

TANCO AUTOWRAP 1250S/1250A MODEL
LIFT ARM ASSEMBLY



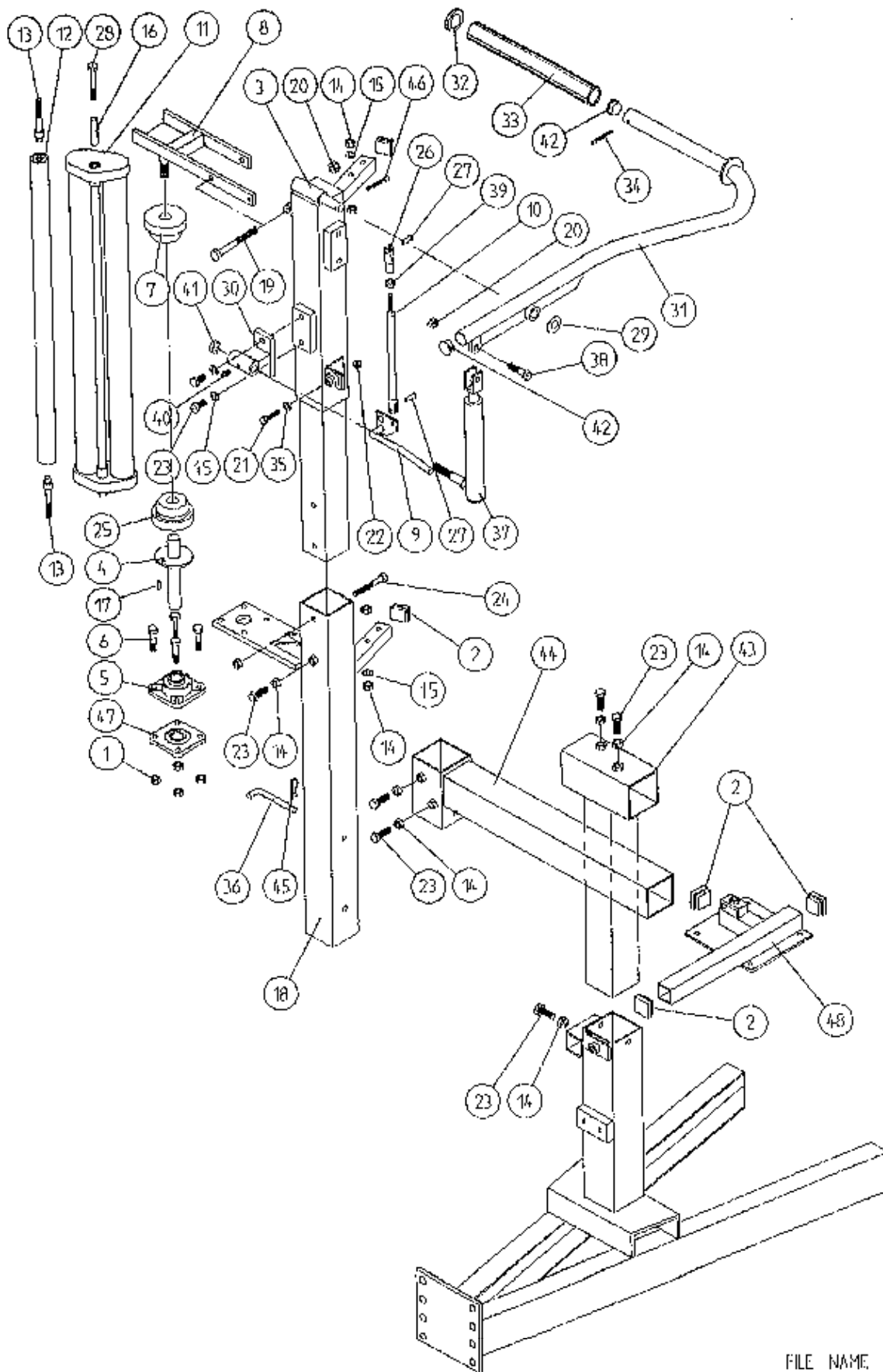
WD 60 - P11

TANCO AUTOWRAP 1250S/1250A MODEL 1994
LIFT ARM ASSEMBLY

PARTS LIST

ITEM NO	DESCRIPTION	QTY	PART-NO.
1.	LIFT ARM ASSY	1	WD625-LA
2.	LIFT ARM - GRAB FRAME	1	WD625-LAGF
3.	LIFT ARM - GRAB SECTION	1	WD625-LAGS
4.	HYDRAULIC RAM D/A	1	Z01-01-140
5.	GRAB FRAME PIVOT PIN C/W GREASE NIPPLE	2	Z03-01-796
6.	M10 HEX HD SET x 25mm LONG	7	Z26-061S
7.	10mm DIA SPRING WASHER	8	Z12-02-10
8.	10mm DIA FLAT WASHER	7	Z11-02-10
9.	MAIN FRAME BOTTOM RAM PIVOT PIN	1	Z03-02-54
10.	MAIN FRAME AND GRAB TOP RAM PIVOT PIN	2	Z03-03-50
11.	1/4" DIA SPLIT PIN x 1 1/2" LONG	11	Z03-21-27
12.	GRAB BOTTOM RAM PIVOT PIN	1	Z03-0-218
13.	GRAB PIVOT & LIFT ARM PIVOT PIN C/W GREASE NIPPLE	4	Z03-01-905
14.	1" DIA HEAVY FLAT WASHER	6	Z10-02-25
15.	HYDRULIC RAM D/A	1	Z01-01-140S
16.	RUBBER BUFFER 100mm DIA x 40mm LONG	2	Z40-26
17.	M16 HEX NUT	4	Z18-16
18.	CHASSIS ASSY	1	WD60-CHA
19.	HYDRAULIC RAM (LIFT ARM)	1	Z01-01-AWQ12
20.	RAM BOTTOM PIVOT PIN	1	Z03-02-330
21.	RAM TOP PIVOT PIN	1	Z03-01-797
22.	TENSION BUSHES	8	Z03-20-015
23.	BUFFER 56mm DIA x 40mm LONG	1	Z40-20
24.	M10 HEX NUT	1	Z18-10

TANCO AUTOWRAP 1250S MODEL 1994 FILM DISPENSER SYSTEM



FILE NAME WDG5-PL7

TANCO AUTOWRAP 1250S MODEL (TRAILED) 1994
FILM DISPENSER SYSTEM
PARTS LIST

ITEM NO	DESCRIPTION	QTY	PART-NO
1	M10 LOCKNUTS	4	Z23-10
2	PLASTIC CAPS (TO SUIT 40 X 40 X 3 RHS)	5	Z32-07
3	DISPENSER MOUNTING (UPPER)	1	WD60-DMUH
4	FILM SPOOL ASSEMBLY	1	WD60-SPO
5	1" DIA FLANGE BEARING C/W CAM LOCK	1	Z06-48EC
6	M10 HEX HD BOLT X 50MM LONG	4	Z26-066B
7	CONE (TOP) C/W BALL BEARINGS	1	Z06-45-01
8	CLAMP ASSEMBLY	1	WD60-DMCA
9	LEVER ASSEMBLY	1	WD60-DMLA
10	LINK ASSEMBLY	1	WD60-DMLK
11	FILM DISPENSER UNIT MK B (55% STRETCH)	1	D6151
12	SLAVE ROLLER ASSY (PLASTIC COATED)	1	WD60-SLR
13	SLAVE ROLLER PIVOT	2	WD60-SRS
14	M12 HEX NUTS	10	Z18-12
15	12M DIA SPRING WASHER	2	Z12-02-12
16	SLEEVE	1	D165-F
17	1/4" DIA TENSION PIN X 3/4" LONG	1	Z03-20-062
18	DISPENSER MOUNTING (LOWER)	1	WD60-DMLH
19	M12 HEX HD BOLT X 130MM LONG	1	Z26-094B
20	M12 LOCKNUT	3	Z23-12
21	M8 HEX HD BOLT X 35MM LONG	1	Z26-042S
22	M8 LOCKNUT	1	Z23-08
23	M12 HEX HD SET X 30MM LONG	8	Z26-082S
24	M12 HEX HD BOLT X 10MM LONG	1	Z26-092B
25	CONE (BOTTOM)	1	Z06-45-02
26	CLEVIS (M10)	1	Z49-335
27	PIN 5/16" DIA C/W CLIP	2	Z49-337
28	M10 HEX HD BOLT X 80MM LONG	1	Z26-0691B
29	3/4" DIA FLAT WASHER	1	Z10-02-19
30	FILM PULL DOWN BRACKET ASSY	1	WD65-FPDB
31	FILM PULL DOWN ARM ASSY	1	WD65-FPDA
32	RETAINING WASHER	1	WD60-859
33	ROLLER	1	WD60-866
34	2" X 1/4" SPLIT PIN	1	Z03-21-29
35	8MM DIA MUD FLAP WASHER	1	Z11-02-081
36	BISSEL PIN (110MM LONG)	1	WD60-874
37	HYDRAULIC RAM	1	Z01-01-W25
38	M12 HEX HD SET X 50MM LONG	1	Z26-086S
39	5/16" UNF HEX NUT	1	Z15-05
40	1/8 BSP ST. GREASE NIPPLE	1	Z39-60
41	M16 LOCKNUT	1	Z23-16
42	1" GB PLASTIC CAP	2	Z32-14
43	DISPENSER MAST HORIZONTAL SOCKET ASSY	1	WD65-DHS
44	DISPENSER MAST VERTICAL SOCKET ASSY	1	WD65-DVS
45	4MM "R" CLIP	1	Z36-02
46	1 1/2" X 3/16" DIA SPLIT PIN	1	Z03-20-05
47	1" DIA FLANGE BEARING	1	Z06-48
48	SPOOL VALVE MOUNTING PLATE ASSY	1	WD65-VMP

FAULT FINDING

PROBLEMS.

1. Drive Belt Slipping on Drive. Tension belt with Automatic tension set to 25 - 30 degrees - see page 8. Check belt is correct pitch if it has been replaced.

2. Drive belt breaking and bottom or Top Rim coming off motor sprocket. Check that cross line relief valve is working on motor. Check motor mount for alignment. Reduce tension on Drive Belt. Check there is no vertical movement of turntable spindle - if so tighten bearing locking screws on spindle and ensure that collar is secure on spindle below bearing.

3. Film Breaking Wash off dispenser and slave rollers. Change roll of film. Use recommended films only.

4. Film not wrapping evenly on bale. Adjust film mast so centre of film roll is aligned with centre of bale.

5. Film Dispenser not Pre-Stretching Film. Check that both Rollers turn when one is turned by hand. If not, fit new gears or replace unit.

6. Tyres coming off 4" platform Support Wheels. Replace Wheels - Reduce speed below 25 r.p.m. - Do not oil or grease path of wheels on platform.

FAULT FINDING

PROBLEMS

9. MAIN BELT MOVING SIDEWAYS

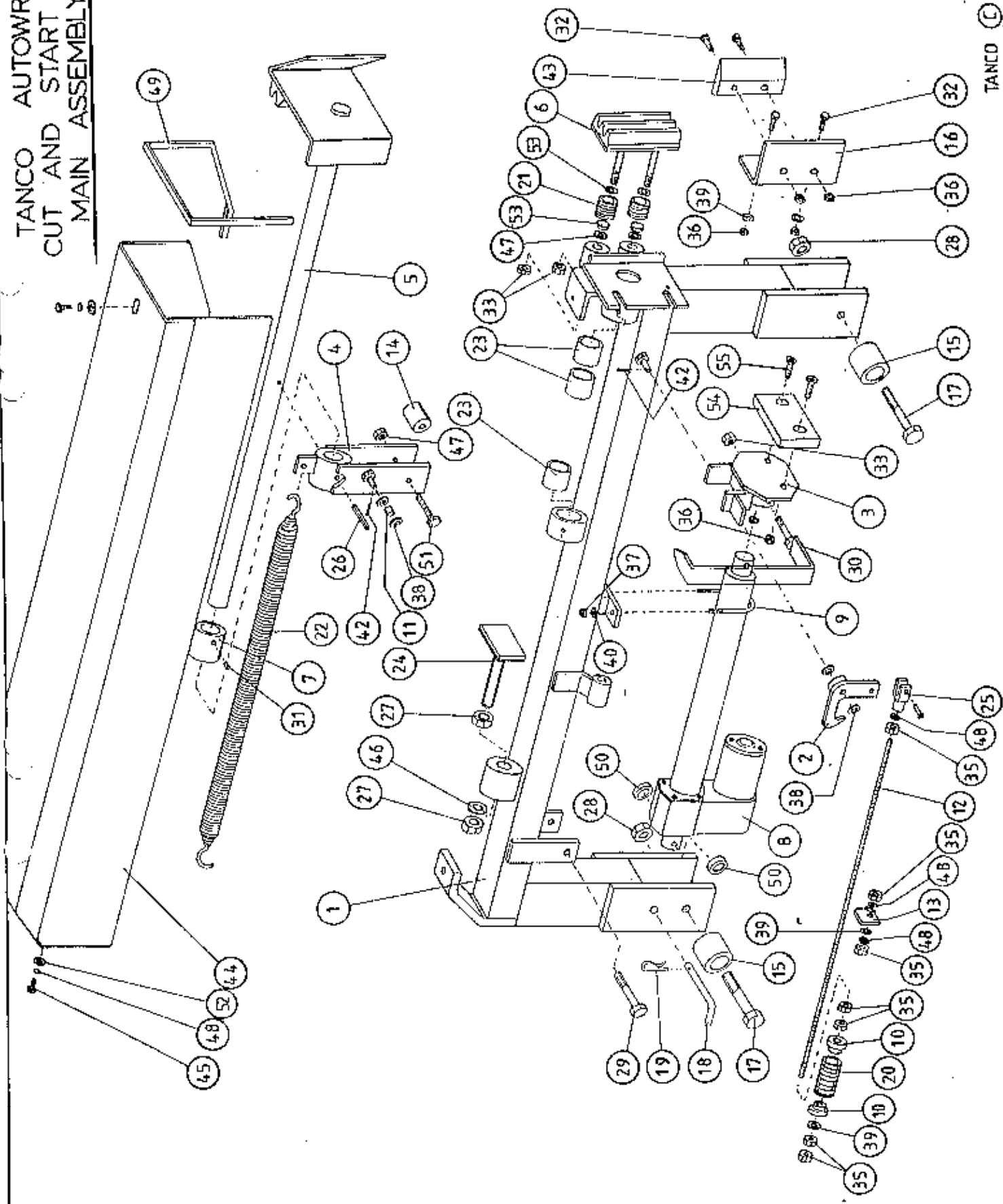
- (i) Ensure vertical rollers (plastic) are tight on the bale. Remember that the bale will reduce in size during wrapping and, on the round bales in particular, the corners will become rounded so that the bale will tend to move sideways due to centrifugal forces. Now, if the plastic rollers are too far apart, the bale will move against one of the plastic rollers whilst the belt will move in the opposite direction - so adjust the vertical plastic rollers so that they keep the bale central on the belt.
- (ii) Adjust bale stop on lift arm so that bale is loaded centrally onto platform.
- (iii) Check that both 6' rollers underneath the bale belt are running parallel to each other. Remember the golden rule - a belt will always move up a slope, so if the rollers are not parallel to each other then the belt will move to the widest setting.

NOTE:

It is important to adjust the idler roller only, as movement of the drive roller will entail adjusting the chain tension also. It is important to note if the belt moves to the same side all of the time, or if it moves first to the gearbox side and then to the other side. With the round bale wrapper, the belt will tend to move to the same side each time because the bale is always loaded the same way.

- (iv) Check that belt is the same measurement each side by running a string around the belt and measuring it. If one side is longer than the other replace the belt but if both sides are same measurement and all above adjustments fail, then try removing the belt and fitting it round the opposite way.

TANCO AUTOWRAP
CUT AND START UNIT (1994)
MAIN ASSEMBLY



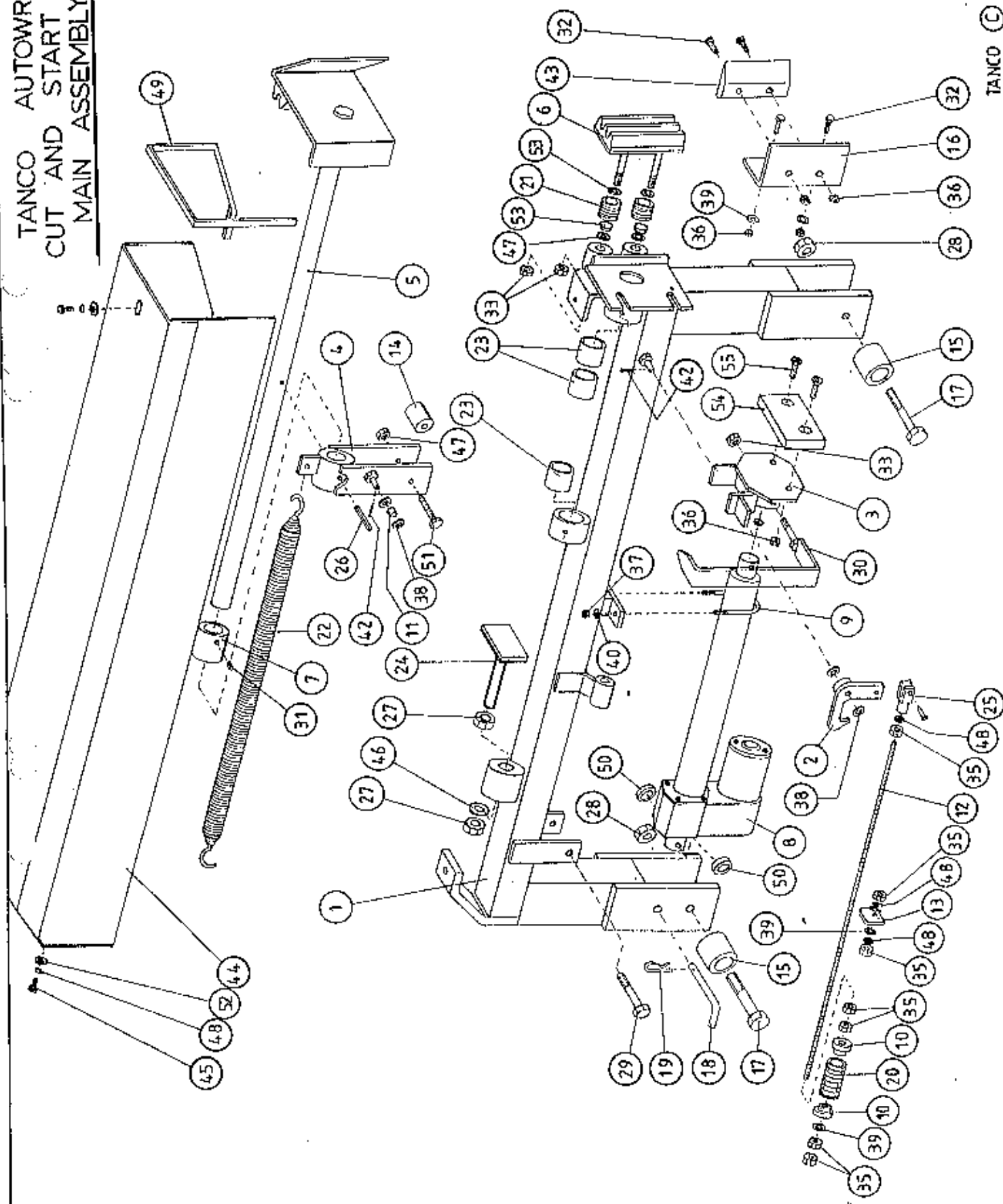
AUTOWRAP

TANCO AUTOWRAP
CUT AND START UNIT (1994)

PARTS LIST

ITEM NO.	DESCRIPTION	QTY	PART -NO
1.	MAIN MOUNTING FRAME ASSY.	1	WD605-MF
2.	LATCH ASSY.	1	WD605-LA
3.	PUSH PLATE ASSY.	1	WD605-PP
4.	GUIDE ASSY.	1	WD605-GD
5.	PLUNGER ASSY.	1	WD605-PL
6.	FILM GRIPPER ASSY.	1	WD605-FG
7.	PLUNGER END CAP	1	WD605-90
8.	WARNER LINEAR ACTUATOR D11 10B5 08	1	Z0605-510
9.	"U" BOLT	1	WD605-45
10.	STEPPED COLLAR	2	WD605-46
11.	SLEEVE 1/2" DIA O.D. X 13/32" DIA I.D.	1	WD605-47
12.	THREADED ROUND 5/16" UNF	1	WD605-48
13.	TRIGGER	1	WD605-50
14.	COLLAR 1" DIA BRIGHT RD. X 41.5MM LONG	1	WD605-51
15.	SPACER	1	WD605-100
16.	BLADE GUARD/MOUNTING BRACKET	1	WD605-105
17.	M12 HEX HD BOLT X 80MM LONG	2	Z26-0901B
18.	BISSEL PIN	1	Z03-22-AW100
19.	4MM "R" CLIP	1	Z36-02
20.	SPRING 16MM O.D. X 1.5MM WIRE X 48MM LONG	1	Z07-34
21.	SPRING 1.09" O.D. X 0.092" WIRE X 1.54" LONG	2	Z07-44
22.	SPRING 1.125" O.D. X 0.125" WIRE X 330MM	1	Z07-46
23.	OILITE OIL RETAINING BUSH 1 1/8" O.D . X 3/4" O.D. X 1" L.	3	Z06-105
24.	RUBBER BUFFER ASSY.	1	WD605-BA
25.	CLEVIS C/W PIN	1	Z49-33
26.	1 1/2" X 1/4" DIA TENSION PIN	1	Z03-20-07
27.	M16 HEX NUTS	2	Z18-16
28.	M12 LOCKNUTS	2	Z23-12
29.	M12 HEX HD BOLT X 65MM	1	Z26-0882B
30.	INDICATOR ASSY.	1	WD605-PR
31.	M8 GRUB SCREW	1	Z28-008
32.	M8 HEX HD SET X 25MM	4	Z26-025S
33.	M12 BINK LOCKNUT	4	Z23-12BX
35.	5/16" UNF HEX NUT	7	Z15-05
36.	M8 LOCKNUT	9	Z18-08
37.	M6 LOCKNUT (NYLOCK)	2	Z23-16
38.	10MM DIA FLAT WASHER	10	Z11-02-10
39.	8MM DIA FLAT WASHER	5	Z11-02-08
40.	6MM DIA FLAT WASHER	2	Z11-02-06
42.	3MM DIA SPLIT PIN	2	Z03-21-02
43.	BLADE	1	WD605-104
44.	MAIN GUARD	1	WD605-MG
45.	M8 HEX HD SET X 20MM LONG	2	Z26-020S
46.	10MM DIA SPRING WASHER	2	Z12-02-10
47.	12MM DIA FLAT WASHER	2	Z11-02-12

TANCO AUTOWRAP
 CUT AND START UNIT (1996)
 MAIN ASSEMBLY

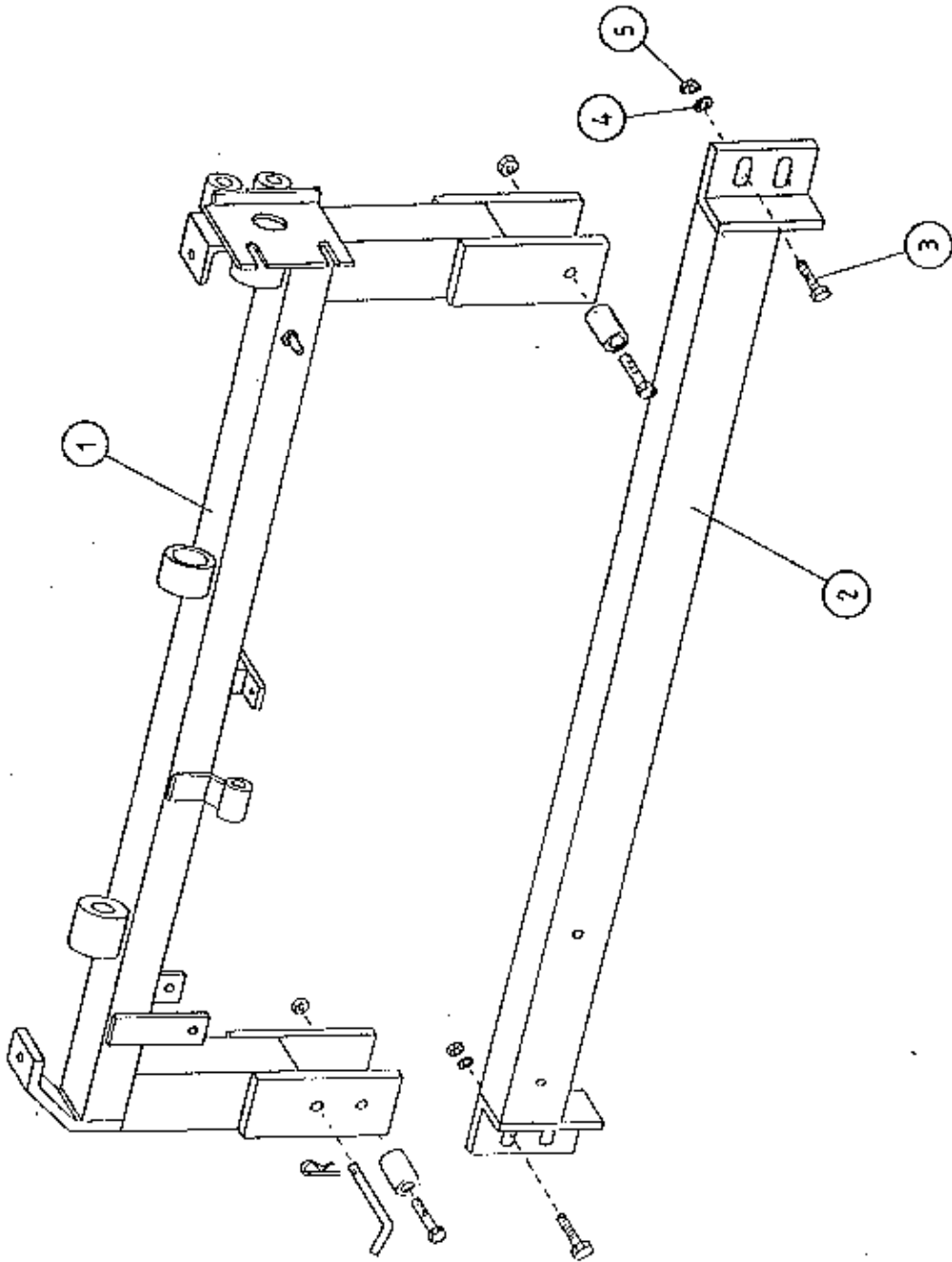


AUTOWRAP

TANCO AUTOWRAP
CUT AND START UNIT (1994)
PARTS LIST

48.	8MM DIA SPRING WASHER	9	Z12-02-08
49.	EDGING STRIP	1	Z44-12
50.	SPACER 1" O.D. X 1/2" I.D. X 6MM LONG	2	WD605-65
51.	M10 HEX HD SET X 20MM	2	Z26-060S
52.	8MM DIA FLAT WASHER 1" O.D.	4	Z11-02-081
53.	25MM O.D. X 12MM I.D. FILM GRIP WASHER	4	Z11-02-12FG
54.	PACKER	1	WD605-133
55.	H8 X 40 COUNTER SUNK BOLT	2	Z13-5-08X40

TANCO AUTOWRAP CUT AND START (1954)
MOUNTING FRAME



WD605-MF

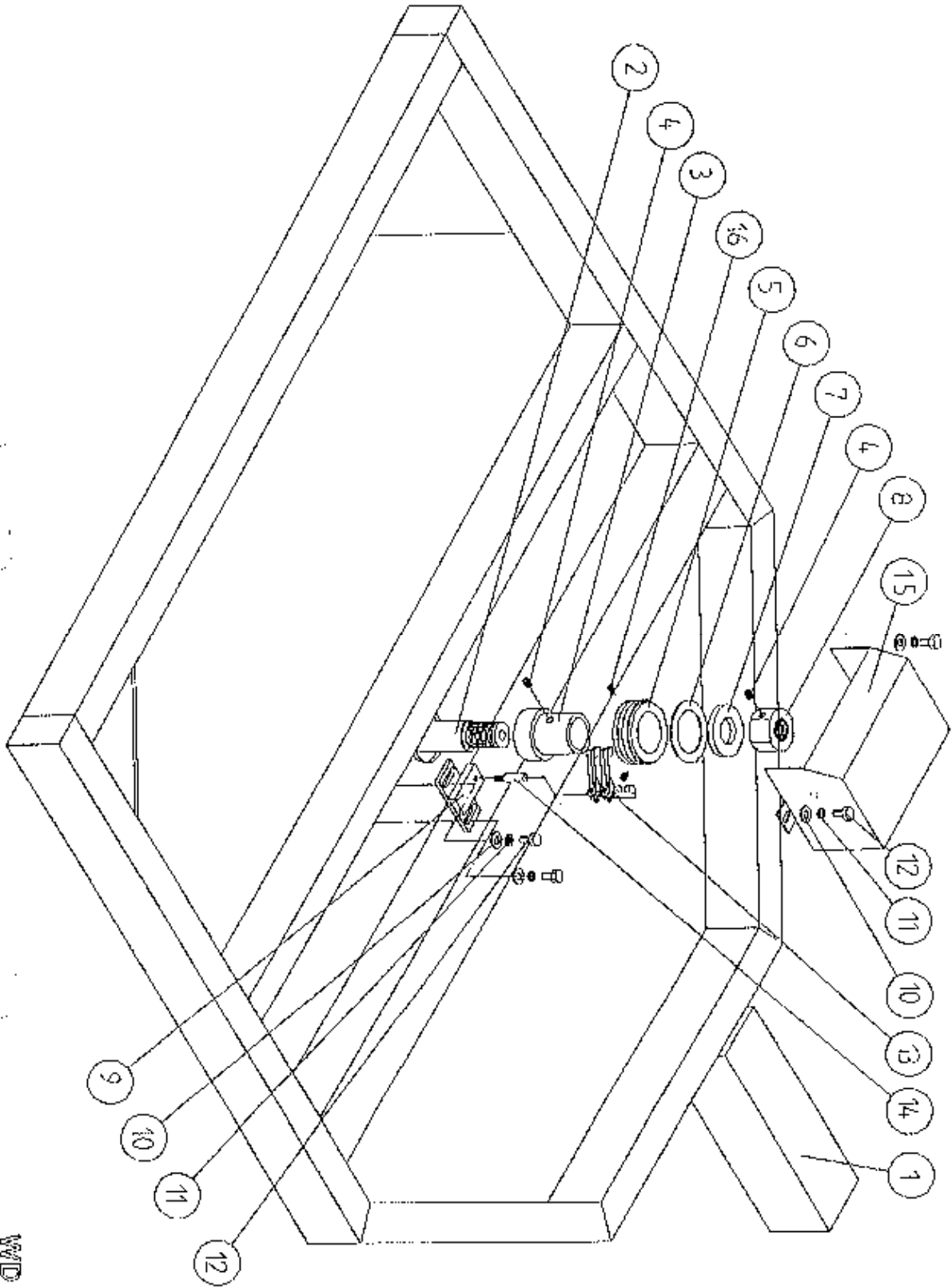
TANCO AUTOWRAP CUT AND START UNIT (1994)

MOUNTING FRAME

PARTS LIST

ITEM NO	DESCRIPTION	QTY	PART-NO
1.	MAIN MOUNTING FRAME ASSY	1	WD605-MF
2.	MAIN FRAME MOUNTING	1	WD605-MFM
3.	M10 HEX HD SET x 30mm LONG	2	Z26-02-10
4.	10mm DIA SPRING WASHER	2	Z12-02-10
5.	M10 HEX NUT	2	Z18-10

TANCO AUTOWRAP - CUT AND START UNIT (1994)
SLIP RING ASSEMBLY



WD 005 - PL2

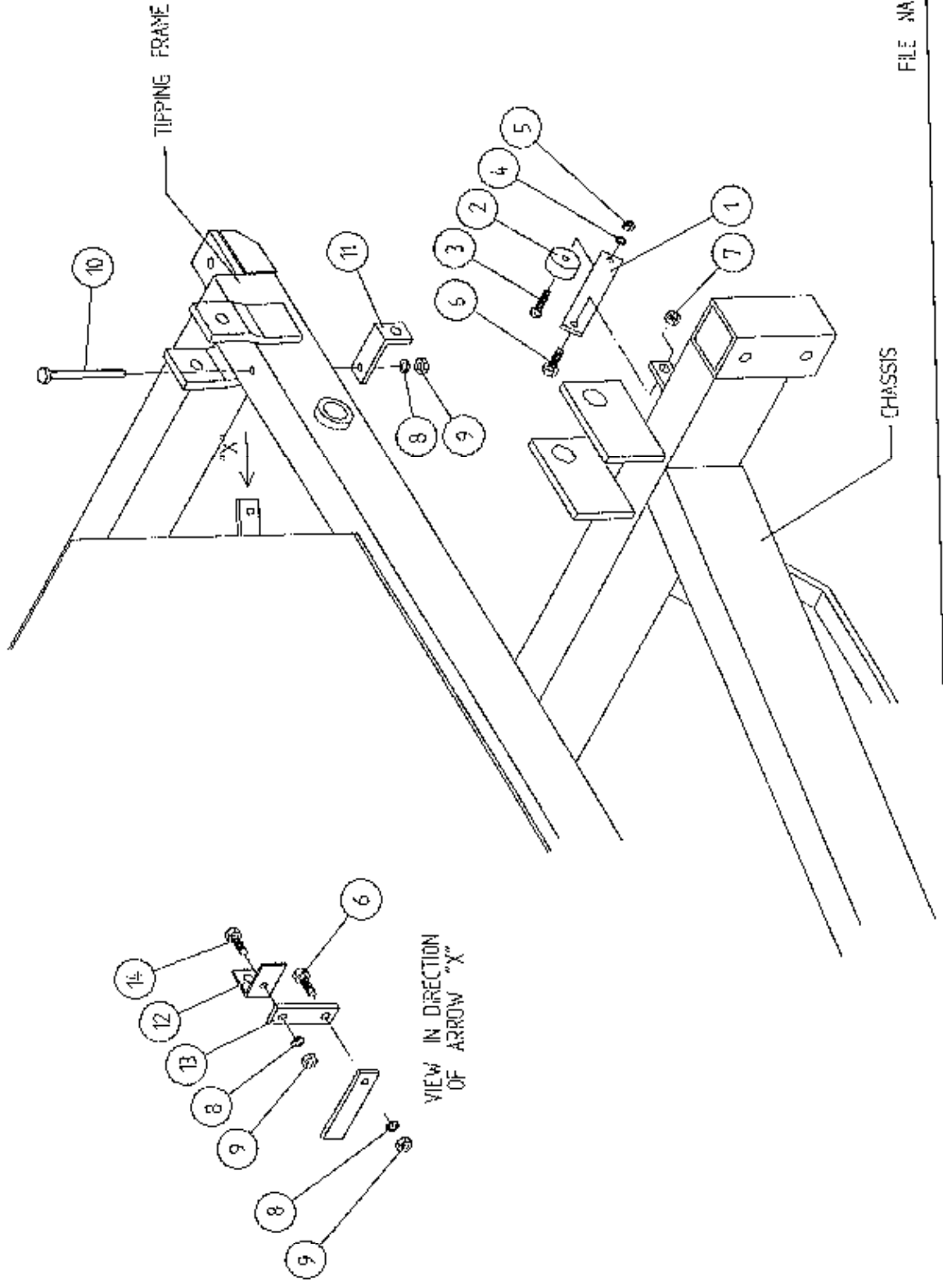
WD605-PL2

TANCO AUTOWRAP CUT AND START UNIT (1994)
SLIP RING ASSY.

PARTS LIST

ITEM NO.	DESCRIPTION	QTY.	PART-NO.
1.	UNDERSIDE OF TIPPING FRAME	1	
2.	TURNTABLE CENTRE SHAFT	1	
3.	SLIP RING MOUNTING SLEEVE	1	WD60-825
4.	M8 GRUB SCREW x 6 mm LONG	2	Z28-007
5.	SLIP RING ASSY.	1	ZD605-308
6.	INSULATING RING	1	ZD605-350
7.	LOCKING COLLAR	1	WD60-770
8.	1 1/4" UNC HEX NUT	1	Z18-300
9.	SLIP RING MOUNTING BRACKET ASSY	1	WD605-SRMB
10.	10mm DIA FLAT WASHER 1" O.D.	4	Z11-02-101
11.	10mm SPRING WASHER	4	Z12-02-10
12.	M10 HEX HD SET x 20mm	4	Z26-060S
13.	BRUSHES	2	ZD605-306
14.	INSULATOR SLEEVE	1	ZD605-304
15.	SLIP RING GUARD ASSY	1	WD605-SRG
16.	M5 GRUB SCREW	2	Z28-005

TANCO AUTOWRAP
 CUT AND START UNIT
 SENSOR & MAGNET MOUNTING BRACKETS



TANCO AUTOWRAP CUT AND START UNIT 1994SENSOR AND MAGNET MOUNTING BRACKETSPARTS LIST

ITEM NO.	DESCRIPTION	QTY.	PART-NO.
1.	MAGNET MOUNTING BRACKET	1	WD605-57
2.	MAGNET	1	D6043
3.	M6 HEX HD SET x 30mm LONG	1	Z26-022S
4.	6mm DIA FLAT WASHER	1	Z11-02-06
5.	M6 LOCKNUT	1	Z23-06
6.	M8 HEX HD SET x 25mm LONG	2	Z26-040S
7.	M8 LOCKNUT (NYLOCK)	1	Z23-08
8.	8mm DIA SPRING WASHER	3	Z12-02-08
9.	M8 HEX NUT	3	Z18-08
10.	M8 HEX HD SET x 100mm LONG	1	Z26-075S
11.	SENSOR MOUNTING BRACKET	1	WD605-58
12.	ROTATE SENSOR MOUNTING BRACKET	1	WD605-120
13.	MOUNTING FLAT	1	WD605-07
14.	M8 HEX HD SET x 20mm LONG	1	Z26-020S

2 2

2 2

TANCO AUTOWRAP

Cut and start Fault Finding Summary.

This summary is to be read in conjunction with operators handbook.

Note: It has been found that most faults can be attributed to a bad power supply. Therefore it is essential that power supply be taken directly from battery terminals, ensuring correct polarity. Operating voltage is 10V D.C. (under load) to 13.5V D.C.

<u>Problem</u>	<u>Proposed Remedy</u>
(1) Bale Wrap monitor does not power on.	(a) Check polarity on connections to battery terminals. (b) Check fuse, in bale wrap controller.
(2) Plunger does not come out after 2 revolutions of turntable.	(a) Ensure that left hand top switch is in auto mode. (b) Check operation in manual mode to ensure that plunger travels in and out. If the plunger does not travel in and out, check all connections from six pin plug, through slip ring to linear actuator.
(2)(i) Buzzer sound continuously "bleep", "bleep" and bale wrap monitor does not count above 2 revs.	(c) check voltage while operating in manual mode. This voltage should be no lower than 10V D.C. (under load). Also check connections on battery terminals. (d) Check that bale wrap monitor is counting revolutions and if not check that turntable sensor is within 6mm of magnet on turntable. (e) Carry out continuity check on turntable sensor, by taking reading cross pins 2 & 3 in six pin plug.